

Introduction



The local authorities of Plymouth, Devon and Torbay have been working to raise awareness of the issue of waste management and increase domestic recycling rates. With the help of the public and their enthusiasm, they have achieved rates of 31%, 50% and 28% respectively. This is great progress, but all of the authorities need to achieve even higher rates over the next few years.

Each authority has to reduce the amount of waste landfilled due to its environmental impact, reduced landfill capacity, escalating costs and to meet government legislation. Failure to reduce the amount of waste landfilled could result in significant fines and much higher costs to residents. However, there is a limit to the amount of waste that can economically be reused, recycled or composted, so ways need to be found to deal with the remaining residual waste. This is the issue we have to resolve.

The councils are working together as the South West Devon Waste Partnership to provide a long term sustainable waste management solution which:

- Uses clean and proven technology
- Reduces our carbon footprint and our reliance on landfill
- Is cost effective, with minimal environmental effect
- Fits the needs of the local community
- Is located close to the source of waste



Photo courtesy of Lawrie Cate

Meeting the Landfill Directive

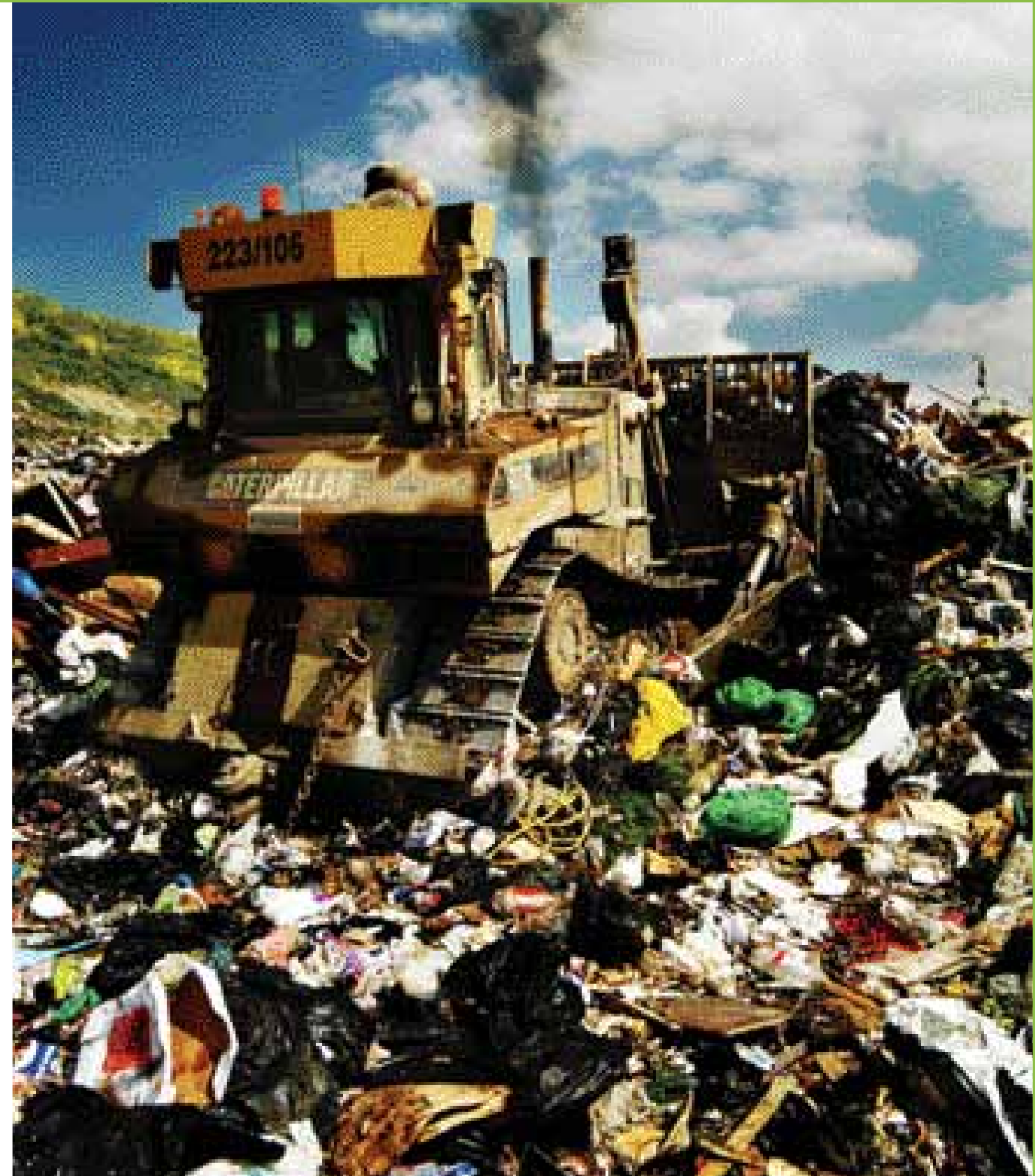
Even if the challenging recycling and composting targets are met, and waste growth is not more than 1% per year (due to more houses being built), there will still be over 200,000 tonnes of non-recyclable waste in South Devon to deal with each year. This is known as residual waste and will require disposal by a method other than landfill.

This is due to the EU Landfill Directive, which limits the amount of biodegradable (rotting) waste that can be landfilled between now and 2020. Each authority has been set an allowance that reduces each year on the amount of biodegradable waste (LATS targets) that it will be permissible to bury over the next 12 years.

The authorities can choose one of three options:

- Provide new facilities to divert waste from landfill
- Buy biodegradable waste permits from other councils (if indeed they have permits to sell)
- Pay fines of £150 per tonne which the government will charge for every tonne over the allowances that authorities send to landfill

The partnership has chosen to provide new facilities to meet its LATS targets.



South West Devon Waste Partnership



Plymouth, Devon and Torbay Councils have for some time considered how the waste disposal needs of the south west Devon area can best be met. The authorities recognised the significant benefits of working together on a single shared residual waste treatment solution at an early stage. They identified at least four reasons why working together would be desirable and mutually beneficial.

- **Value for money** - a joint procurement would increase the scale of the project and attract a stronger market interest, making it more affordable
- **Using one site rather than three** – there are limited suitable sites for waste treatment in the area (none within the Torbay area) so using one site would reduce the costs and timescale involved
- **Plymouth is the largest urban area** west of Bristol with good transport infrastructure, so it has an influence extending well beyond its authority boundary
- **A single shared solution is cheaper** than three individual solutions, creating economies of scale and shared operational costs, which benefits each authority and their residents



Site location - the background

Each council has to look at possible sites for dealing with waste as part of their waste planning frameworks. Devon and Plymouth Councils identified a number of locations as suitable for strategic waste facilities. Following public and stakeholder consultations, these sites have been approved by Government Planning Inspectors. In addition to allocated sites, the planning frameworks also set out how new sites could be considered.

The partnership came together after deciding that the most economical way to treat the waste from SW Devon would be through a joint solution likely to be located on a site in or near to Plymouth, as the main producer of waste.



Waste Minimisation



The main priority for all the authorities is to reduce the waste produced in the first place. If less waste is created, it will save money and have significant environmental benefits. The authorities help the public to reduce their waste through:

- Home composting
- Real Nappy Campaign
- Community furniture reuse
- Promoting the Love Food Hate Waste campaign
- Working in schools, helping them to Reduce, Reuse and Recycle
- Targeting trade abuse at Household Waste Recycling Centres
- Enforcement on kerbside collections
- Fortnightly collections (Torbay, Teignbridge, South Hams)
- “Don’t let Devon go to waste” TV & radio campaign
- Packaging waste reduction

The targets for waste reduction are measured as the weight of waste not recycled or composted per person.

The partnership has the following targets:

2001/02	2009/10	2014/15	2019/20
332kg	314kg	284kg	276kg



Partnership and National Recycling Targets

Authority	2009/10	2014/15	2019/20
Plymouth	36%	39%	43%
Torbay	31%	46%	51%
South West Devon	58%	59%	60%
South West Devon Waste Partnership rate	45%	49%	51%
Government Waste Strategy 2007	40%	45%	50%



Current Waste Management Arrangements

Plymouth is recycling and composting 31% of its domestic waste. Following the closure of Chelson Meadow landfill site in March 2008, the remainder of Plymouth's waste is landfilled at Lean Quarry in Cornwall. This is a temporary arrangement until 2014.

Devon is recycling and composting 50% of its domestic waste. The rates for Teignbridge, South Hams and West Devon councils are 56%, 57% and 39% respectively. The remainder of the waste from the 3 districts is landfilled at Heathfield and Lean Quarry landfill sites having been bulked up (transferred from dustcarts to larger vehicles to reduce waste miles) at transfer stations.

Torbay is recycling and composting 28% of its domestic waste. The remainder of the waste goes to Torbay transfer station and from there is transported to Heathfield landfill site for disposal.

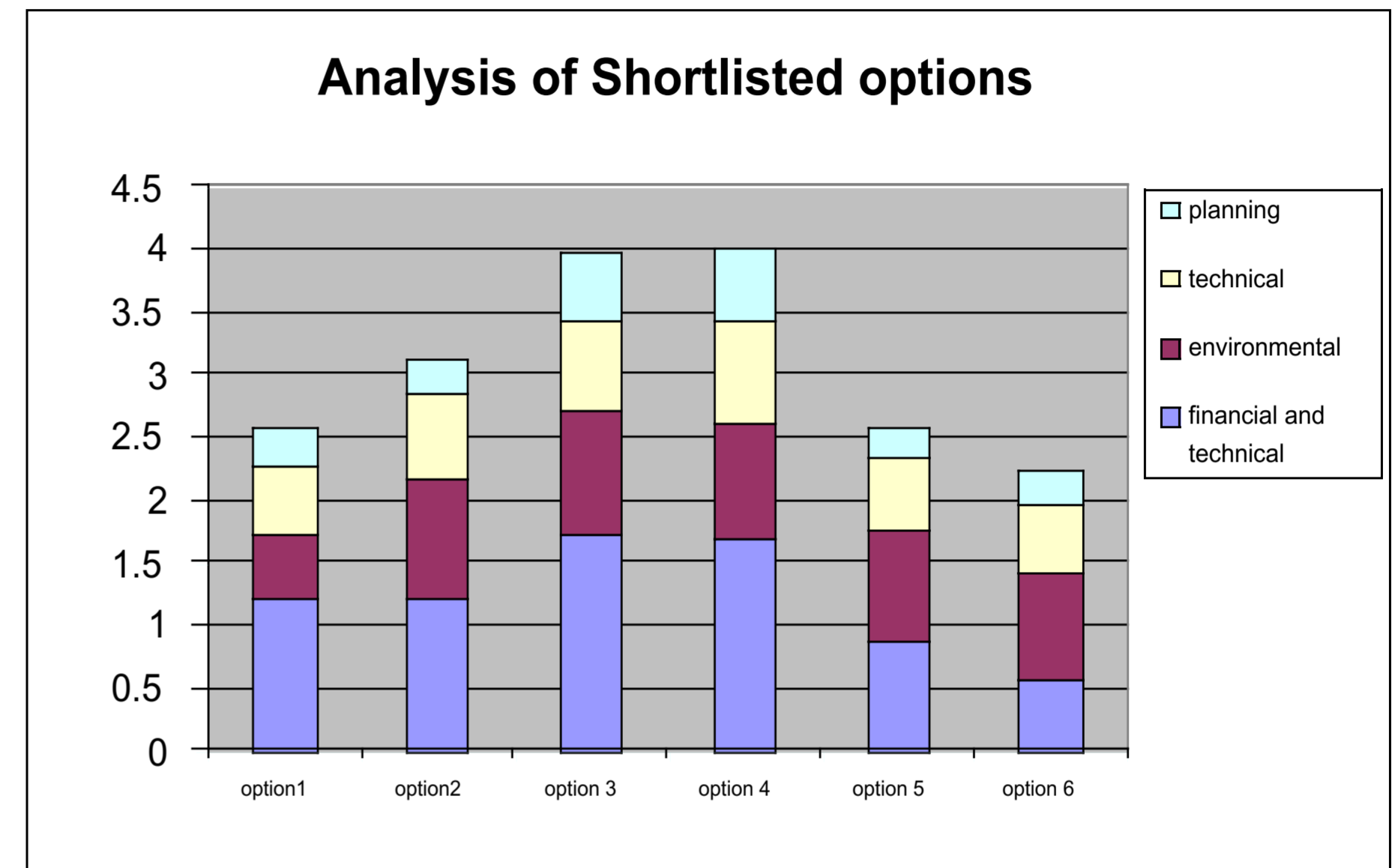


Consideration of Options by the Partnership



- Option 1** Landfill
- Option 2** Individual EfW facilities for each authority
- Option 3** A single sub regional EfW facility in Plymouth
- Option 4** A single sub regional EfW plus Anaerobic Digestion (AD) for food waste in Plymouth
- Option 5** Three MBT facilities (with AD) and EfW for RDF product in Plymouth
- Option 6** Three MBT facilities (with AD) with RDF product sent to EfW in Cheshire

All options underwent detailed modelling to assess their performance relative to each other. 26 different criteria were considered, including Planning, Technical, Environmental, and Financial and Economic factors, and scored accordingly.



After further examination looking at options 3 and 4, it was concluded that Option 3 gave better value for money and should be the reference project.

Current Waste Management Arrangements

Plymouth is recycling and composting 31% of its domestic waste. Following the closure of Chelson Meadow landfill site in March 2008, the remainder of Plymouth's waste is landfilled at Lean Quarry in Cornwall. This is a temporary arrangement until 2014.

Devon is recycling and composting 50% of its domestic waste. The rates for Teignbridge, South Hams and West Devon councils are 56%, 57% and 39% respectively. The remainder of the waste from the 3 districts is landfilled at Heathfield and Lean Quarry landfill sites having been bulked up (transferred from dustcarts to larger vehicles to reduce waste miles) at transfer stations.

Torbay is recycling and composting 28% of its domestic waste. The remainder of the waste goes to Torbay transfer station and from there is transported to Heathfield landfill site for disposal.



The story so far

August 2007 The three authorities begin working together to explore potential joint waste treatment options.

April 2008 The South West Devon Waste Partnership formally created. Outline business case submitted to Defra for financial PFI support.

October 2008 £95m PFI credits awarded to the partnership by Defra. Procurement process commences.

November 2008 Specialist waste management companies invited to take part in procurement.

January 2009 8 companies qualify and invited to develop outline solutions for the project.

April 2009 6 companies submit 9 potential solutions to the partnership for consideration.

July 2009 3 companies shortlisted to develop 5 solutions in more detail.

October 2009 3 companies to develop their solutions
4 solutions shortlisted at 4 sites.



Story so far... continued

October 09	First stage of detailed solutions returned
November 09	Invitation for full detailed solutions
March 2010	Detailed submissions returned MVV Umwelt - North Yard Devonport Viridor - New England Quarry
October 2010	Call for Final Tenders
September 2010	Return of Final Tenders MVV Umwelt - North Yard Devonport Viridor - New England Quarry
January 2011	Select Preferred Bidder
March 2011	Contract Award Planning Application Environmental Permit
2014	Operational Commencement

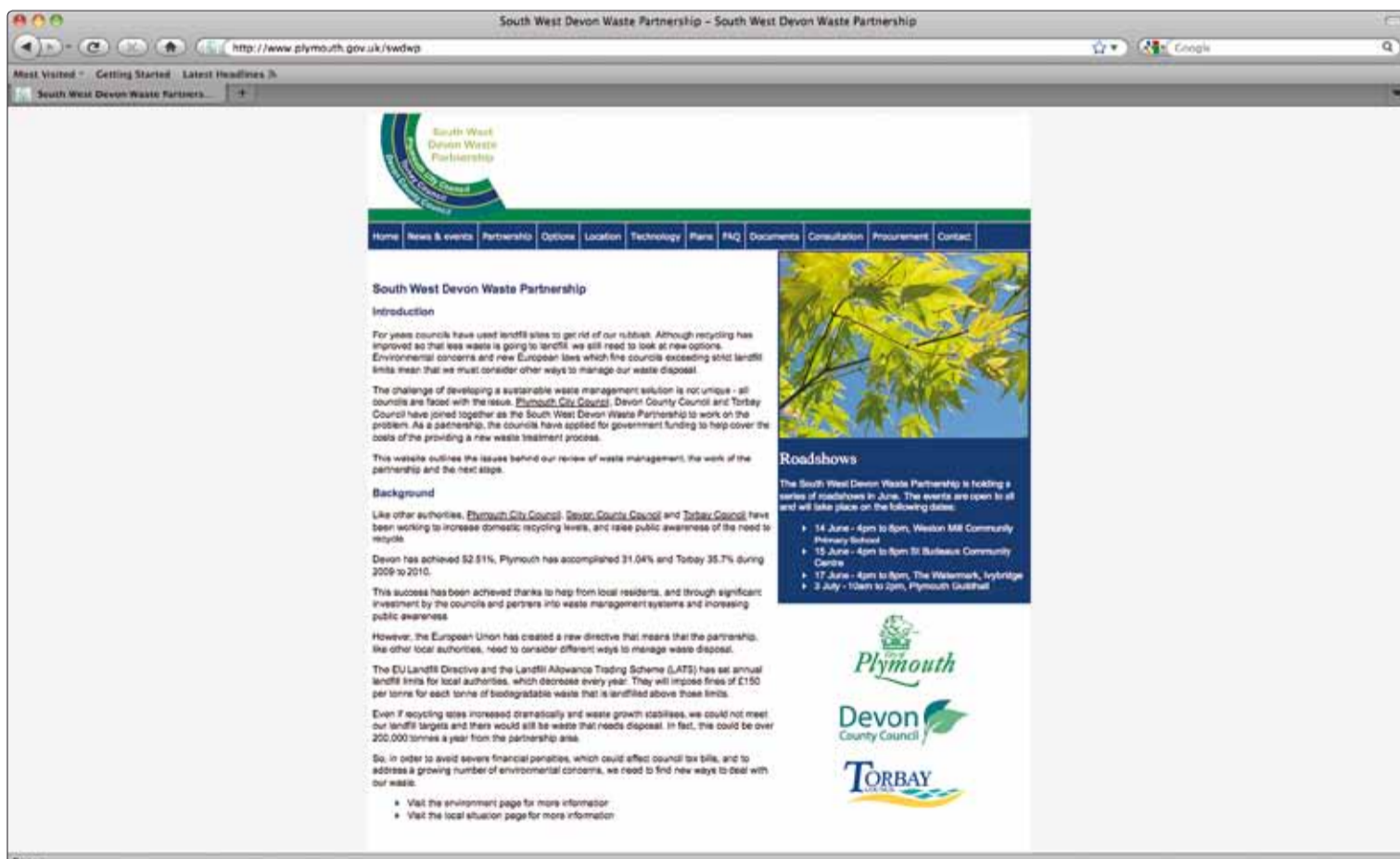


Communication

Communication is a key priority for the partnership. We have spent a lot of time talking and listening to residents, communities, groups and organisations about the proposals, responding to queries and comments. We will continue to do this as we believe it is important to understand people's concerns and provide information where possible.

To help us communicate, we have held a series of roadshows, exhibitions and briefings throughout the region at various venues. We will continue to hold such events as and when new developments occur.

Our website is a good source of information and is continually updated with the latest news. Go to www.swdwp.co.uk to find out more about the work of the partnership.



What are the main public concerns?

Events, letters and other feedback have shown us there are 8 broad areas of public concern about the project. These are covered in the following boards in more detail, but in summary:

- Where might a facility be located, and why?
- What will it look like?
- Why Energy from Waste?
- What are the effects on the environment and recycling?
- What effects might it have on health?
- How much extra traffic would be involved?
- How much will it cost, and how will it be paid for?
- Where can I find out more information?

