



## chapter 8 Cultural Uses and the Evening / Night Time Economy

Stimulating culture and leisure activities - to stimulate participation in cultural pursuits, promoting creativity and expanding opportunities for people to experience high quality recreational, cultural and leisure activities.



# Cultural uses and the evening / night-time economy

## Introduction

**8.1** Culture and leisure are vitality important to peoples' quality of life and it is important that a city of Plymouth's size offers a level of cultural and leisure facilities that meet the needs of its growing population, and the wider needs of the sub-region. A strong cultural / leisure sector comprises a holistic mix of:

- Individual skills and the opportunity to enhance and develop these
- A range of accessible, affordable and high quality culture and leisure facilities where people can develop their skills and interests
- An active private sector involvement
- A strong and pro-active voluntary and community (not for profit) sector
- A public and statutory sector that provides support and resources, where required, for sustainable cultural development.

These are key to the creation of a successful, vibrant city and helps to create a place where people want to live, work and visit.

**8.2** The task of the LDF is to set out a spatial planning framework which will facilitate positive improvements to the city's cultural and leisure and evening / night-time economy provision. The following sections will outline how this will be delivered.

## Context

**8.3** The draft Regional Spatial Strategy identifies culture as embracing a wide variety of activities, places, values and beliefs that contribute to a sense of identity and well-being for everyone, and notes the important role that culture can play in shaping sustainable communities. It specifically identifies the need for improvements to Plymouth's cultural provision as a key part of Plymouth's urban renaissance.

**8.4** Plymouth already has many successful cultural and leisure attractions and venues, including the Theatre Royal, Plymouth City Museum and Art Gallery, Plymouth Pavilions, the National Marine Aquarium, the Mayflower Centre and Mount Edgcombe Country Park (jointly managed with

Cornwall County Council) as well as a number of more local cultural initiatives and leisure facilities such as The Soundhouse at Estover and Music Zone in Devonport. Plymouth College of Art and Design and the University of Plymouth have both taken a leading role in promoting the arts within Plymouth.

**8.5** Creative industries (including advertising, architecture, the creative arts, design, photography, film and video, music and performing arts, publishing, TV and radio and related software and IT activity) have been identified as one of six key economic growth sectors. Currently, around 8,500 people are employed in this sector in Plymouth, but this figure is likely to grow over the plan period.

**8.6** The evening and night economy refers to bars and pubs (A4 uses), night clubs and casinos (sui-generis uses), restaurants and cafes (A3 uses) and take-aways (A5 uses) that are open outside normal shopping hours, in some cases up to 24 hours a day. It also includes theatres (sui generis), cinemas, concert halls and live music venues (D2 uses), and arts and cultural venues (D1 uses) that are open in the evening. It is a particular facet of the economy which poses both major opportunities and challenges. It generates jobs and has the potential to add vitality to the city and make it safer by increasing activity, patterns of movement and opportunities for natural surveillance. However, it can also be associated with noise, crime, anti-social behaviour and community safety problems, particularly in the case of nightclubs, large drinking establishments and late-night take-aways.

## Approach

**8.7** To promote culture and creativity, the Council has established the Creative Plymouth initiative. The Council is preparing a Cultural Strategy which will set out policies and proposals for safeguarding and enhancing the city's cultural and leisure offer over the LDF period.

**8.8** The Council will focus on enhancing cultural / leisure provision in the following areas of the city:

- **City Centre / University.** Here Derry's Cross already acts as a culture and leisure cluster with the Theatre Royal, Casino, Cinema and the Pavilions. There is a Cultural Cluster developing focused on the University. There are proposals to replace the Central Library with a modern, expanded service and expand the City Museum and Art Gallery, and for the creation of a Plymouth Architecture Centre. The University is also constructing a new Faculty of Arts, Architecture and Humanities which will house the Plymouth Arts Centre
- **The waterfront areas.** The regeneration of Millbay, Sutton Harbour and Devonport and the enhancement of The Hoe provide opportunities for new and enhanced cultural / leisure provision in these areas. There are proposals to refurbish Plymouth Pavilions and to construct an additional 'pod' at TR2 in the East End to house its education centre
- **Central Park.** There is a proposal to develop a Life Centre at Central Park which will be an outstanding venue for sport, active recreation, health, arts, education and the environment.

**8.9** A further initiative of strategic significance involves the development of a Plymouth History Centre. This will provide access to a local studies library, the collection of Plymouth and West Devon records and the film archive held by SW Film and Television Archive.

**8.10** The city needs to achieve a better balance of evening and night-time activities and a better distribution throughout the city. In some areas there are concentrations of pubs, bars and nightclubs - in particular along Union Street, around the Barbican Leisure Park / Barbican and North Hill / Mutley which have led to problems of excessive noise, litter and anti-social behaviour. These existing concentrations need to be managed carefully to achieve a better balance of activities and to avoid adding to existing problems.

**8.11** Some parts of the city currently suffer from lack of activity in the evenings and at weekends. The City Centre in particular would benefit from the vitality that restaurants, cafes and bars would bring, as long as these are provided in the right quantity and in the right locations. The city's waterfront regeneration areas at Sutton Harbour, The Hoe, Millbay and Devonport offer opportunities for a balanced increase in socially inclusive leisure and evening / late night uses such as cafes, restaurants and bars. It is important that within these areas uses are carefully balanced so that evening / night-time uses are complementary to, rather than conflict with, neighbouring uses.

## Strategic Objectives and Policies

### Strategic Objective 8

#### Delivering Cultural / Leisure Facilities and the evening /night-time economy

To facilitate the creation of Plymouth as a vibrant waterfront city with a thriving cultural and leisure sector and a diverse, safe, balanced and socially inclusive evening / night economy. This will be achieved by:

1. Establishing and promoting one or more sustainable cultural quarters as centres for arts, culture and entertainment for the city.
2. Promoting the waterfront regeneration areas as locations for leisure, culture and entertainment amenities.
3. Promoting the development of the Life Centre at Central Park.
4. Promoting local culture and leisure venues in other parts of the city to enhance local provision.
5. Promoting the development of a balanced evening / night-time economy within the City Centre and waterfront regeneration areas.

### Targets

Progress towards achieving this objective will be measured against delivery of cultural and leisure sector projects and against targets to be developed in relation to the Council's work on promoting tourism and leisure trips to the city. The estimated number of day visits to the city during 2004 was 2.8 million.

## Policy CS12 Cultural / Leisure Development Considerations

To enhance the city's cultural / leisure offer by promoting the development of cultural / leisure clusters in the following locations:

1. The City Centre (focused on the University and North Hill area).
2. The waterfront areas (focused on the regeneration areas of Millbay and Devonport and the Barbican).
3. Central Park (the Life Centre).

Developments should be of a high quality design, add to Plymouth's vibrancy and contribute to the sustainable regeneration of the city.

Cultural / leisure uses will be permitted in District Centres as long as they are of an appropriate scale and will contribute to the creation of sustainable, linked communities.

The loss of leisure, arts or cultural facilities will be permitted only where there are overriding regeneration or community benefits from such a development, in which case consideration must be given to the replacement of the facilities elsewhere

**8.12** This policy aims to reinforce and supplement the proposals for cultural and leisure facilities within the Area Action Plans, and to facilitate the implementation of the city's Cultural Strategy (in preparation), Arts, Libraries, and Museums Strategies. It seeks to promote culture and leisure within Plymouth as a key part of the city's urban renaissance, to create jobs and to improve people's quality of life. It also needs to be recognised that growth in water based recreational activity should be delivered in a way that avoids adverse impacts on the integrity of the European Marine site.

**8.13** This policy will be implemented through the normal planning process and through the identification of proposals sites in other DPDs. In particular, the following AAPs will contain proposals for cultural / leisure facilities:

- Central Park (proposals for the Life Centre)
- Millbay / Stonehouse (proposals for the Pavilions and the waterfront)
- City Centre (proposals for the North Hill / University area cultural cluster)
- Sutton Harbour (proposals for the Barbican and waterfront)
- Devonport (proposals for the South Yard Enclave and Mount Wise).



## Policy CS13

### Evening / Night-time Economy Uses

To encourage evening / night time economy uses that contribute to the vitality of the City Centre and waterfront areas and that support the creation of a safe, balanced and socially inclusive evening / night time economy, subject to the following considerations:

1. Cumulative impact - in areas where there is already a concentration of bars and pubs (A4 uses) and night clubs and where there are existing unacceptable problems of disorder and nuisance arising from them, there will be a presumption against further large scale facilities.
2. Complementarity - the proposed use should not create an unacceptable impact on neighbouring uses in terms of noise, traffic and disturbance.
3. Balance – new uses should support the creation of a balanced provision of evening / night-time uses.

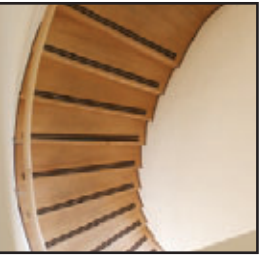
8.14 This policy aims to support the development of a vibrant City Centre and waterfront areas and to supplement proposals set out in these Area Action Plans. It also aims to ensure the development of a balanced evening / night-time economy and the sustainable regeneration of the city.

8.15 This policy will be implemented through the normal planning process and through policies and proposals in the following AAPs - City Centre, Sutton Harbour, The Hoe, Millbay and Devonport.

#### Key Sources:

- Economic Vision and Strategy (2006) – EDAW.
- Employment Land Review (2006) – Baker Associates
- Plymouth, South West Devon and South East Cornwall Sustainable Growth Distribution Study (2005) – Baker Associates
- Plymouth Sustainable Neighbourhoods Studies (2005/06)– LDA Design
- Community Planning Studies (2000)– City Council





## chapter 9 Education

Raising educational achievement - to ensure the highest quality opportunities exist in education, learning and training, improving school performance and raising aspirations and standards of achievement for all age groups.



# Education

## Introduction

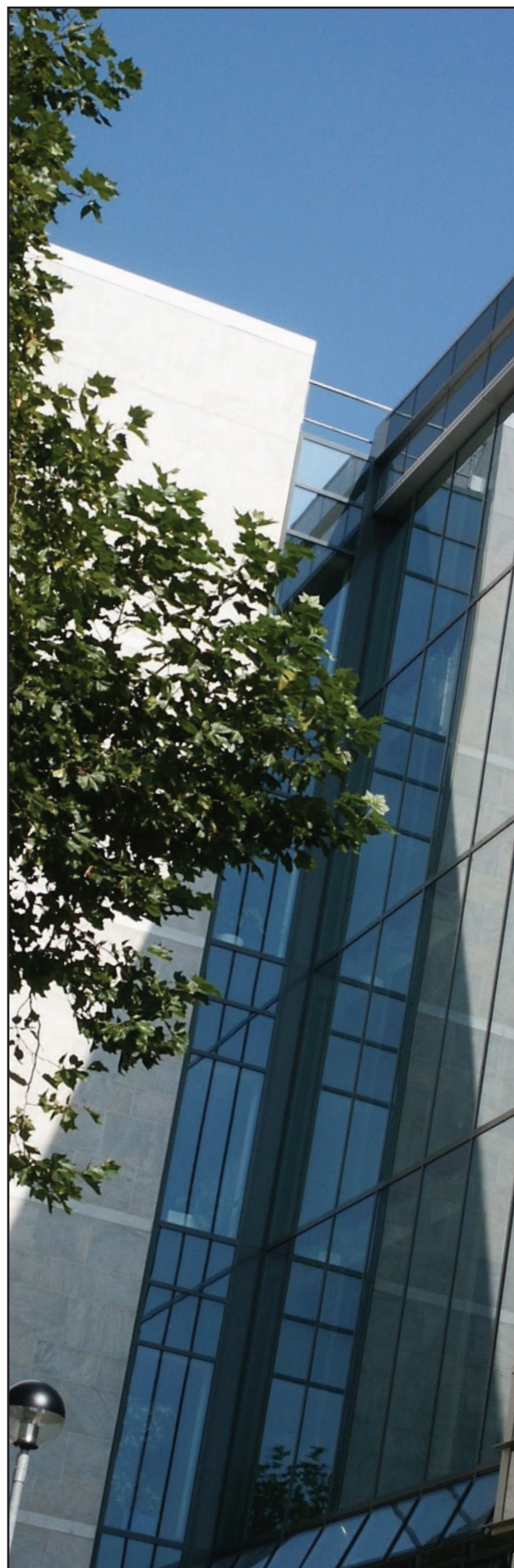
**9.1** This section of the Core Strategy sets out how education, childcare and early years provision will change over the LDF period. The task of the LDF is to set a spatial planning framework which will support positive improvements to provision and the achievement of the city's vision. The Council has produced a School Implementation Plan 2005 – 15 which sets out proposals for improving provision that will be outlined in this section. The spatial planning requirements of this strategy, together with requirements for childcare and early years, will be identified.

## Context

**9.2** Childcare and early years education are vital – both to provide the best start in life for every child and for enabling parents and carers to combine childcare with employment or training. The Government, as part of its Sure Start policy, is supporting the establishment of Children's Centres to provide affordable childcare in disadvantaged neighbourhoods.

**9.3** Schools play a vital role within the community, and are central to our vision of creating sustainable, linked communities. The Council inherited a significant amount of surplus school capacity at Local Government reorganisation in April 1998. In addition, falling birth rates have led to smaller school rolls, especially at primary school level. As a result there is a need to review and, where necessary, rationalise school provision. At the same time, there is an opportunity to invest in building new schools to meet modern educational needs and improve levels of educational attainment, especially in priority neighbourhoods of the city. There are also opportunities to provide for wider community use of school facilities.

**9.4** Plymouth has a high quality further and higher education sector which makes a substantial contribution to teaching, learning and research that is recognised regionally, nationally and internationally. This includes, for example, Plymouth University, College of St. Mark and St. John, Plymouth College of Art and Design, the Peninsula Medical School and the new Peninsula Dental School, and the College of Further Education.



## Approach

**9.5** The Council aims to provide a positive policy framework to enable the city to excel at all levels in educational provision and achievement.

**9.6** In relation to early years development, “All Children First” is Plymouth’s Early Years Development and Childcare Partnership. It aims to support the development of good quality, inclusive, sustainable childcare places in response to parental demand across Plymouth. The purpose is to offer parents greater choice, availability and flexibility in high standard, affordable childcare and early years education. There are currently eight Children’s Centres in Plymouth, and there are proposals to establish a further seven centres by 2008. The aim is to ensure that all of Plymouth’s priority neighbourhoods are served by a centre.

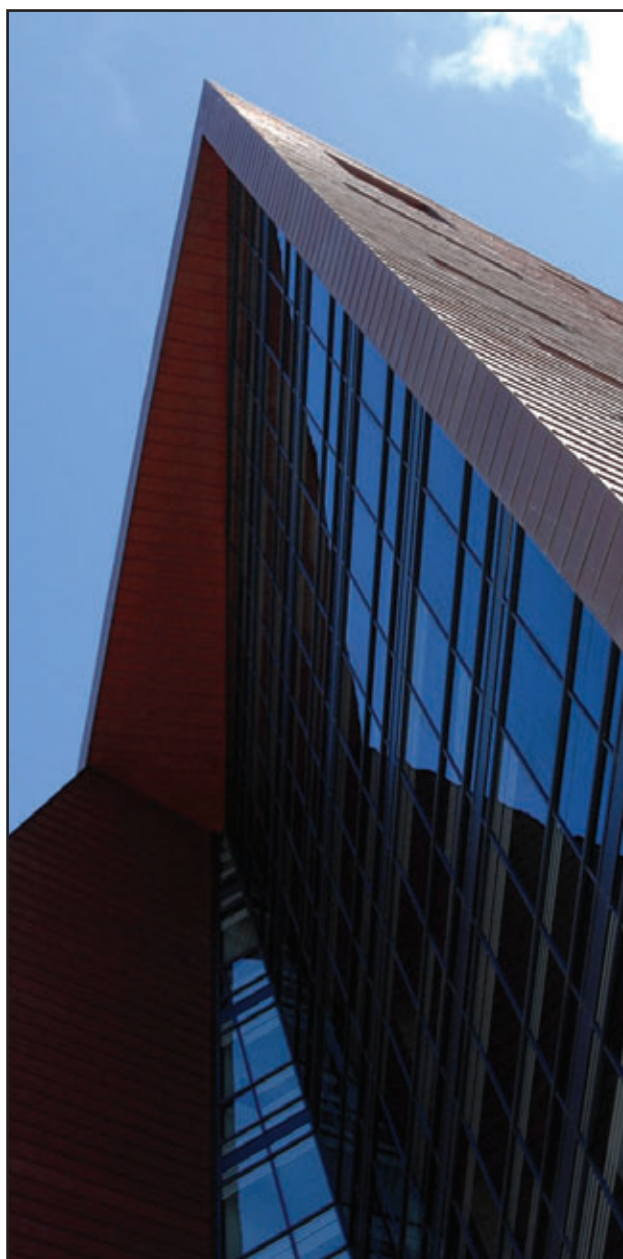
**9.7** In order to raise educational attainment and adjust school provision to changing needs, the Council has produced a School Implementation Plan 2005 – 15. This sets out a number of proposals for improving overall educational provision in Plymouth, removing surplus capacity, and extending the role of schools to serve the wider community in better ways.

**9.8** Under the Private Finance Initiative (PFI), a new primary school will be built in Barne Barton by 2008, to replace two existing primary schools (Barne Barton and Bull Point). Whitleigh Campus will also be built with PFI funding (a federation of Whitleigh Primary, Woodlands Special and Sir John Hunt Community College) to create an inclusive, extended, 0 – 16+ learning campus. It is intended that this project will be completed by 2008. In addition, the quality of education provision will be enhanced to meet extra needs generated in the major regeneration areas of Devonport, Millbay, the East End and North Plymstock and proposals for these will be included in the respective AAPs. The rationalisation of four primary schools in Southway is under consideration, and proposals will be included in the Site Allocations Development Plan Document.

**9.9** In implementing the School Implementation Plan 2005-15, the Council will seek to identify suitable sites that are accessible so that new schools can play their part in creating sustainable linked communities. Where existing school sites become redundant, they should be redeveloped in a way

that supports the creation of sustainable linked communities and that protects the city’s open spaces and playing pitches.

**9.10** The Council wishes to enable its further and higher education establishments to continue to deliver an excellent standard of teaching, learning and research in ways that contribute to the vitality of the city and to the creation of sustainable linked communities. Major new investment is anticipated in this part of the education sector in the plan period – including very notably the opening of a prestigious Dental School in the next few years which will complement Plymouth’s growing reputation in the relation to the medical and healthcare sector (one of the city’s priority economic growth sectors – see Economy section).



## Strategic Objective and Policy

### Strategic Objective 9 Delivering Educational Improvements

To set a spatial planning framework that supports improvements in education to enable everyone to share in Plymouth's growing prosperity. This will be achieved by:

1. Supporting the development of new Children's Centres to improve the quality of childcare provision in the city.
2. Supporting the School Implementation Plan in a way that contributes to the creation of sustainable, linked communities.
3. Planning for new education provision in the long term in response to anticipated population growth, including the safeguarding of key sites as appropriate.
4. Supporting the enhancement of the city's higher education establishments so as to improve the quality of teaching, learning and research in Plymouth.

### Targets

Progress towards achieving this goal will be measured by the following targets:

1. Delivery of new primary schools in Barne Barton, Devonport, Millbay, Southway and Plymstock, and the Whiteleigh Campus, by 2008-2016.
2. Delivery of the Peninsula Dental School by 2008.

### Policy CS14 New Education Facilities

Development of pre school, school or further / higher education facilities should be:

1. Well designed, well related to neighbourhood services and amenities, and easily accessible by sustainable transport modes.
2. Include, where appropriate, provision for community use in addition to their educational use.

Proposals for the redevelopment of redundant educational sites should support the creation of sustainable, linked communities including the need to protect the city's open spaces and playing pitches.

9.11 This policy aims to facilitate improvements to education provision provided that they also contribute to the wider objectives of the spatial strategy. It also seeks to ensure that any redundant educational sites are redeveloped in a sustainable way.

9.12 This policy will be implemented through the normal planning process and through the allocation of sites for development in the relevant Development Plan Documents – including the Devonport, Millbay / Stonehouse, East End, and North Plymstock AAPs.

#### Key Sources:

- School Implementation Plan 2004-14 – City Council
- Plymouth Sustainable Neighbourhood Studies (2005/06) – LDA Design
- Community Planning Studies (2000)– City Council

