

Please note: If you are receiving a paper copy of this through the post and you have access to a computer, please let us have an e-mail address so we can email a copy in the future.

Gypsy and Traveller Sites

The Efford Gypsy and Traveller Site was approved by Planning Committee on 25 June 2009. This means that an application can now be submitted for Government Funding to build the site. The site consists of ten pitches.

You can view the planning application online at www.plymouth.gov.uk/planningonline reference: 09/00603/FUL.

622 comments were made on the other two suggested sites, all comments are available to view at www.plymouth.gov.uk/gypsyandtravellerssitesldf

This included suggesting over twenty sites that you thought should be considered or looked at again.

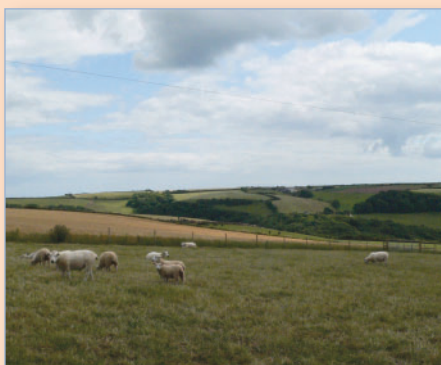
A summary report is being compiled at the moment and is expected to be published soon. All those who have commented will be notified when it is published. This will include details of what happens next in this consultation.

Plymouth's Green Space Strategy

Plymouth's Green Space Strategy 2008 - 2023, adopted April 2009, is now available to view on the City Council's website at www.plymouth.gov.uk/greenspacestrategy

The Green Space Strategy is a key step towards protecting and improving Plymouth's green spaces. It provides a vision and objectives for how green spaces should be planned and managed and it will help to secure attractive, safe and easily accessible spaces for all to enjoy. The Green Space Strategy sets out proposals for how existing green spaces can be improved to be safer, cleaner, more accessible, and more sustainable. It also includes exciting proposals for two new parks to be created at Derriford and North Plymstock. **The Green Space Strategy has been developed through detailed research into the existing provision and quality of green spaces and research into how people in Plymouth view green space. It forms part of the Local Development Framework evidence base and will inform future Local Development Framework Development Plan Documents.**

The public consultation on the draft Green Space Strategy in the summer of 2008 showed a high level of support for the vision and objectives. The comments received have informed adopted Green Space Strategy. A consultation summary of the comments made and how they have influenced the Strategy is also available on the website.



Stepping out into the big outdoors

An exciting project to get more people to enjoy Plymouth's parks and green spaces as well as the surrounding countryside is underway thanks to a £1million from Natural England, the Big Lottery Fund and the project partners.

Plymouth has 18 per cent of the South West's most deprived wards, less than 40 per cent of its adults exercise once a week and 15 per cent of its children are obese.

Stepping Stones to Nature aims to change these statistics by **promoting Plymouth's many fabulous, but unsung, green spaces** as a first step on a journey to experiencing the wide-ranging benefits of exercise and getting outdoors.

Stepping Stones will bring together experts from public health, parks, protected landscapes, neighbourhood renewal, play, rights of way, and outdoor education to ensure that **people of all ages and backgrounds have the opportunity to use Plymouth's natural spaces.**

The project partners are Plymouth City Council, British Trust for Conservation Volunteers, Dartmoor National Park Authority, Groundwork South West, the National Trust, Open Air Laboratories Network, Plymouth Public Health Development Unit, Tamar Valley AONB, University of Plymouth.



Not just Planning Services



Helping you through the recession

The Council's Economic Development Unit has been working closely in partnership with other council services, local organisations and agencies to help people in the City who are affected by the recession.

Over recent months there have been a number of recession advice events held in the city by Jobcentre Plus, Business Link and other public and private sector partners. A team of Council staff have attended each event to provide immediate and practical information about Council services that can help individuals and businesses manage their way through the recession.

The Council's "**Help beat the Recession**" webpages are also regularly updated with information to include **advice on council tax discounts, housing benefit, home insulation grants and a range of guidance for businesses.** These recession advice pages also provide helpful contact numbers and links to websites of other agencies and organisations offering support. These pages can be found at www.plymouth.gov.uk/recession

Computer terminals at the Council's First Stop (at the Civic Centre) provide **free access to Government, Council and NHS web pages**, while libraries across the city offer free internet access to look for work and to find further advice.

In June the Economic Development Unit collated and presented a report to cabinet on the effects of the economic downturn and the council's action plan in response to the issues facing the people of Plymouth.

Plymouth was also the first city in the South West to set up a response unit to cater to the needs of large numbers of people facing unemployment. **The Plymouth Advice Centre for Employment (PACE)** was developed by the Plymouth Area Action Force, which is a partnership of organisations including Plymouth City Council. The unit is able to offer support, advice and training services under one roof and is tailored to employers facing the prospect of making multiple redundancies.




The Economic Development Unit will continue to monitor the recession and help co-ordinate the council's responses and actions to support the people of Plymouth at this challenging time. For more information please visit www.plymouth.gov.uk/recession or email invest@plymouth.gov.uk



Planning Applications

You can view all planning applications by going to www.plymouth.gov.uk/planningonline or by visiting the Civic Centre.

Some of the major applications currently being considered...

Planning Application	Short description
	<p>Former Ministry of Defence site at Mount Wise, Devonport</p> <p>An alternate design for a new mixed use residential development in a Georgian replica style. Including a hotel, restaurant, car parking and landscaping.</p> <p>Planning Application Numbers: 09/00525/REM, 09/00777/FUL, 09/00613/FUL, 09/00614/LBC</p>
	<p>Plymouth College of Art</p> <p>A new further education centre extension rising to seven storeys in height and associated landscaping.</p> <p>Planning Application Number: 09/00775/FUL</p>
	<p>University College of St Mark and St John</p> <p>Creation of a new main entrance/reception area, new campus vehicular access comprising partial demolition and new build, alterations to access arrangements and creation of a new car parking area.</p> <p>Planning Application Number: 09/00687/FUL</p>

Applications that have recently been approved...

Planning Application	Short description	Find out more by looking up the Planning Application online
St Aubyn Church, Chapel Street, Devonport	Works to redundant church building involving part conversion to a new library and part conversion to a smaller church and construction of single storey side extension	09/00588/FUL
West of Efford Ford, Efford	Use of land as permanent Gypsy and Traveller site (ten pitches) to include amenity blocks, hardstandings, a new access road and provision of a new footpath along Military Road	09/00603/FUL

Statement of Community Involvement

The Statement of Community Involvement went to Full Council on 27 April 2009 and had cross party support from all the Councillors.

The SCI is a set of minimum standards for how you can get involved in decisions. You can use this to make sure you are being involved in decisions properly. Find out more at www.plymouth.gov.uk/sci

It is also part of the Compact for the local Strategic Partnership. Find out more about the Compact: www.plymouth.gov.uk/lspcompact

The latest Planning Service Customer Charter has been published and can be viewed at www.plymouth.gov.uk/pandrcustomercharter

Planning diary of events...

All events are free and open to the public.

If you have any questions please contact Sharon Sheppard on 01752 307893

23 July 2009 - 2.30pm	Planning Committee, Council House
Monday 3 August 2009 - 2pm	Draft City Centre Area Action Plan to Full Council
18 August to 29 September 2009	<p>Consultation for City Centre Area Action Plan</p> <p>Saturday 22 August - Pride Event, 11am-7pm, Plymouth Guildhall</p> <p>Wednesday 2 September - Sundial, City Centre, 10am-5pm</p> <p>Saturday 19 September - Place de Brest, City Centre, 10am-4pm</p> <p>Thursday 24 September - Frankfort Gate, City Centre, 12noon-3pm</p> <p>Thursday 24 September - Outside Marks and Spencer, Cornwall Street, City Centre, 4pm-7pm</p> <p>Find out more and make your comments online at www.plymouth.gov.uk/ldf</p>
Thursday 20 August 2009 - 2.30pm	Planning Committee, Council House

Please note that all these events may be subject to change, please call to confirm details before attending.



What else should be in the newsletter?

This newsletter should be useful for you – if it's not what should it have in it? Let us know by contacting us.

Keep in touch...

Planning Applications:

www.plymouth.gov.uk/planningapplications
planningconsents@plymouth.gov.uk
 01752 304366

Local Development Framework:

www.plymouth.gov.uk/ldf
ldf@plymouth.gov.uk
 01752 305477

Building Control

www.plymouth.gov.uk/buildingcontrol
buildingcontrol@plymouth.gov.uk
 01752 304343

Planning Services, Department of Development, Plymouth City Council, Civic Centre, Plymouth PL1 2AA

If you would like this newsletter in an alternative format please call 01752 305477.

