

Keeping you updated with planning Plymouth's future

Issue 5 - May 2008

Sutton Harbour Area Action Plan update...

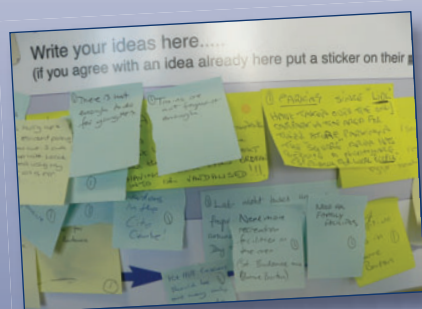
The Sutton Harbour Public Examination took place over two days at the beginning of April. The independent inspector listened to all the points raised and also visited several sites to consider issues further. He will now produce a binding report, the Council will make this public as soon as it can and will also notify all those who have been involved.



Your place, your future

The year long consultation is still continuing. A very successful workshop was held in Keyham recently looking at Morris Town, Keyham and Stoke neighbourhoods. Lots of really good discussions and ideas were had which have contributed to the information you will see in the Co-op on Wolesley Road and Stoke Library (see calendar for details).

Some improvements have been made to the on-line bulletin board so if your neighbourhood is part of this consultation you can make comments by going to <http://plymouth-consult.limehouse.co.uk/ypyf>



Finally all the information collected about all the neighbourhoods will be displayed in the Guildhall at the beginning of July. This will also include a range of information about work in other Council Departments and partners across the city.

Find out more about this consultation by visiting www.plymouth.gov.uk/yourplaceyourfuture

Help!

In the last newsletter we asked for volunteers to help improve the website and how you find information – but we only had one willing volunteer!

We know information can be hard to find on the website but we need to understand where things are going wrong and we need your help to do that. It won't take long and you can do it at home if you have a computer or come in to the Civic Centre and use a computer here if you need to.

Please contact us on the contact details on the back of this newsletter if you can spare some time to help improve our website for you.



Waste Development Plan Document – ADOPTED

A Government inspector has declared Plymouth's Waste Development Plan Document (DPD) to be sound.

Sites at both Ernesettle and Coypool have been accepted by the Planning Inspector as suitable possible locations for strategic waste management facilities to serve the city in years to come.

The inspector concluded that the Council has correctly prepared the plan which outlines how Plymouth will manage its waste in the future, how the city can reach recycling and composting targets as well as possible locations for waste management facilities.

This means that the Council has cleared a significant milestone in its long-term plans to dispose of the city's waste in the most efficient and environmentally friendly way possible.

The inspector compiled the report following a public examination held at the beginning of February where people were able to voice opinions about the DPD.

It has not yet been decided what sort of facilities they will be, but the sites of Ernesettle and Coypool have been put forward for possible 'strategic management facilities'. This means they could house an energy from waste (EfW) plant and other facilities including recycling, composting or other waste treatment for domestic and commercial waste.

The inspector concluded that

- The sites appeared adequate to accommodate the range and type of facilities needed
- That the Council carried out a thorough and exhaustive search for suitable waste management sites
- The allocation of Ernesettle and Coypool as strategic waste management sites ensures there is sufficient capacity to meet future needs; enables competition to ensure any solutions are value for money; allows for different waste streams, allows for the flexibility necessary to adapt to new technologies as well long term flexibility
- The consultation processes on the DPD was sound
- There was no evidence to suggest that there would be an adverse health impact from EfW facilities. The inspector said: "It was important to be guided by the evidence of the latest technology and the controls available over the operations of such facilities, rather than by fears that may or may not be based on what has occurred in the past."

Responding to concerns raised in the public examination about the Ernesettle site he concluded:

- The plan would not have an adverse impact on regeneration plans for Saltash
- EfW facilities would be visible but it was an opportunity "to develop an iconic waste management facility at Ernesettle."

The final choice of site and type of facility will not be known until companies submit bids to build and run the facility on behalf of the South West Devon Waste Partnership, made up of Plymouth City Council, Torbay Council and Devon County Council.

The Waste Plan was formally adopted by Full Council on 21 April. We are one of the first councils in the country to have our Waste DPD declared sound under the Local Development Framework.

Making sure you can get involved...Review of the Statement of Community Involvement

The Statement of Community Involvement is going to be reviewed this year. We want it to improve how you are involved with the LDF.

We want to make it clearer what you can expect from the Council or developers that are running consultation that informs decisions about the future of the City.

We would appreciate it if you could take a few moments to answer this questionnaire and express your interest in contributing more information in a focus discussion group if you are able to.

You can complete this form on-line by going to www.plymouth.gov.uk/sci or return the questionnaire enclosed with this newsletter.

It's not just about the LDF...

...Countryside in the city

People living in the north of the city may one day be able to enjoy the great outdoors on their doorstep in a new community park.

Plymouth City Council is drawing up exciting new proposals for a community park in Derriford in the north of Plymouth.

The aim is to link the three valleys of Bircham and Forder South and Forder West to creating 146-acre countryside park within the city boundaries.

Among the ideas being looked at is a treetop trail of paths and walkways across the valleys to enable people to get to them and walk through them more easily.

Another key element is creating a 'One Planet Living' centre within the park that could include a working farm, rare breeds, farm shop, café or restaurant, an exhibition gallery, and educational facilities.

Other ideas include community allotments and orchards as well as enabling other recreational activities to take place.

The ideas have been put forward in a study carried out by the city council in partnership with LDA Design, which calls for the whole park to become a nature reserve.

The study also suggests a social enterprise organisation be established to manage the community park, following the development of a business plan, which will be drawn up in the next few months.

A working group will be set up shortly to explore development and delivery options for the community park and a number of consultation events will be arranged for people to give their views and comments on these ideas.

The North Plymouth Community Park Study will be fed into the emerging Derriford and Seaton Area Action Plan.

Read the feasibility study and make your initial comments by going to www.plymouth.gov.uk/northplymouthcommunitypark



...All Our Futures - Plymouth's strategy for people over 50

People over 50 are being asked to speak out about plans to cater for the growing population of older people in Plymouth.

Plymouth City Council has developed a draft plan that aims to make growing old in the city better and easier. It has been put together with the help of a group of people over 50 and other agencies in the city providing services for older people.

Maggie Grant, a member of the over 50s reference group who helped to put the plans together, said: "Everyone presumes they know what's best for older people, but it's rare we are ever asked for our views so it was good to be able to be involved in something from the beginning. I'd encourage anyone interested to come forward and comment on the strategy so that we capture as many different views as possible. I certainly enjoyed sharing my views about what I think would be good for older people in the city."

The draft plan, which is called 'All Our Futures – Plymouth's strategy for people over 50 years. 2008 – 2013.' aims to show how the city will cater for the needs and wants of people over 50 in the city.

It covers everything from transport, social care and health services, housing, employment, financial planning and facilities to help stop older people from becoming isolated.

Jo Atkey, Policy and Performance Officer for the Council, said: "It's important that as a city we plan for the increasing population of people over 50. According to the 2006 census, we have over 82,000 people over 50 in the city. That's 33 per cent of our population, which is above the national average of 28 per cent. So it's crucial that we have a city that's good to grow old in and encourages active ageing."

Anyone can comment on the draft plan by going to the council's website www.plymouth.gov.uk

Alternatively paper copies of the draft plan can be posted to people upon request by simply calling Jamie Whitford-Robson on 01752 305546

Please send your comments to: All Our Futures, Plymouth City Council, FREEPOST (SWB40608), Plymouth PL1 2ZZ or email us at: consults@plymouth.gov.uk.

The closing date for comments about the first draft is Friday 16 May.

LDF diary of events...

All events are free and open to the public, those highlighted in light blue need to be pre-booked.

For events that need booking please contact Sharon Sheppard on 01752 307893

10 May 9.30am - 12.30pm	Community consultation for Efford	Efford Library
Week of 12 May	Community consultation for Stoke, Ford, Morice Town and Keyham	Co-op Wolseley Road and Stoke Library
Week of 2 June	Community consultation for Peverell, Higher Compton and Pennycross	Morrisons
4 June	Central Park AAP public examination	Jury's Inn
1, 2 and 3 July	Final opportunity to add your views to the Your Place, Your Future consultation and see all the comments and ideas made	Guildhall

Please note that all these events may be subject to change, please call to confirm details before attending.

Sharing your experience...

Now that several LDF documents have been adopted there are a large number of community representatives and individuals that have had experience of being involved throughout the process.

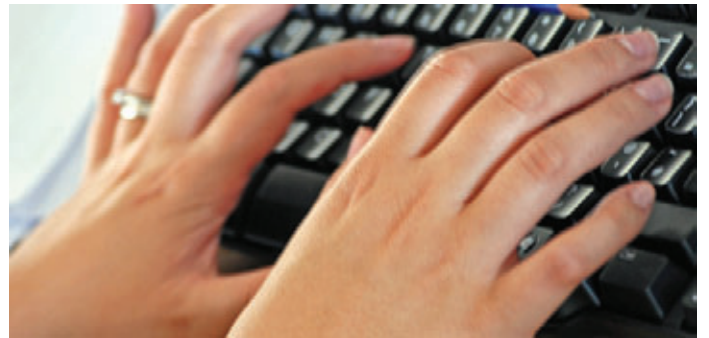
Have you been involved in one of these plans - perhaps Waste, North Plymstock, Millbay or Devonport?

Would you like to share your experience and perhaps give some advice to people who are involved in plans that are at an earlier stage of development?

If you are interested in sharing your experience (positive or negative!) or advice for other community groups getting involved for inclusion in the next newsletter please contact Hannah Dempsey on the contact details provided below.

Please make your comments online...

If you have access to the internet please make your comments on line. This helps to process all the comments really quickly and allows everyone to see all the comments made. Most importantly it helps us to keep in touch with you and update you on the LDF.



If you would like this newsletter in an alternative format please call 01752 305477.

Keep in touch...

Planning and Regeneration Service,
Department of Development, Plymouth City Council,
Civic Centre, Plymouth PL1 2AA

Tel: 01752 305477 Fax: 01752 304294

Email: ldf@plymouth.gov.uk

What else should be in the newsletter?

This newsletter should be useful for you – if it's not what should it have in it? Let us know by contacting us.

