

Improving Customer Service

Planning Services want to know what you think about the customer service you have received this year.

A short survey is available online at www.plymouth.gov.uk/ldf and click on 'live consultations'

Please take 5 minutes to complete this survey. It will inform the Business Plan for the Service next year, the results will help us to focus our improvements for 2010.

It is being sent to everyone who receives this newsletter, and anyone who has made a comment or submitted a planning application over the past year.

Paper copies of the survey are also available, please call us on 01752 305477.

City Centre Consultation

Thank you to everyone who made comments on the recent City Centre and University Area Action Plan consultation.

The plan has now been sent to the Secretary of State. An independent Planning Inspector will look at the plan, all the comments made, and all the other evidence provided to decide if it is the best plan for the city. There will be a public examination in February for the Inspector to discuss any issues or concerns with the Council and some of you who made comments.

The Inspector will then write a report. Any changes suggested must be made before the Council can adopt the plan.

For more details go to www.plymouth.gov.uk/ldf

You said, we did

Planning Services linked in with a wider Council campaign to show how we are listening to your views and how your views are making a difference.

Showing how your comments are improving plans for the future is something that will now be a regular feature in this newsletter.



The President of the Royal Town Planning Institute visits Plymouth

The President of the RTPI, Martin Willey visited the city in September to look at the work Planning Services has been doing. He met with Planning Officers to discuss current projects and had a tour of some of the key sites in the city.





Young people plan the future

John Kitto Community College Year 7 students helped plan the future of their neighbourhoods in September. They looked at what was good in their area, and what could be improved. They presented their ideas to the Planning Service.

These ideas will be included as part of the ongoing consultation for the Sustainable Neighbourhood Development plan, the plan that looks at the future of each of the neighbourhoods in the city.

New Development Guidelines

New Development Guidelines have been published for your comments. They aim to give a user-friendly guide for a range of developments including shop fronts and house extensions.

It gives detail guidance which will be used when looking at planning applications. This includes details on parking spaces, shop fronts, fencing, driveways and walls. It also looks at ways of minimising a developments carbon footprint, and how they can produce a net gain in biodiversity.

The guide is part of the Local Development Framework, once the consultation is finished and the results have been considered it will be adopted as a Supplementary Planning Document.

Paper copies of the document are available at the Civic Centre and your local Plymouth library from 6 November.

You may also find it useful to come and speak to Planning Officers at Drake Circus on Friday 20 November and Saturday 21 November, or by coming into the Civic Centre.

Find out more and make your comments at www.plymouth.gov.uk/ldf, by e-mailing ldf@plymouth.gov.uk, or by post to Planning Services, Civic Centre, Plymouth PL1 2AA. Comments must be received by 18 December 2009.

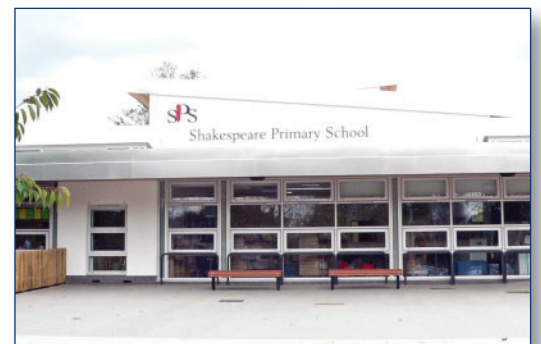
Recently completed developments – schools



Mayflower Community School at Ham Drive this school has replaced North Prospect and South Trelawny Primary School.

Shakespeare Primary School in

Honicknowle is an amalgamation of West Park and Chaucer Primary Schools. Both schools have been awarded the Government Secure by Design Award.



Urban fringe consultation

Plymouth City Council and South Hams District Council held two workshops to help develop a new planning document for the urban fringe – the area around the outside of the city.

The workshops were attended by a variety of people who live and work in the area. They are the start of a long process to help identify key issues and challenges as well as opportunities for the future in this area.

Please contact us if you would like to get involved with this plan.

It's not just about Planning Services...

Share your views on the sports facility strategy for Plymouth

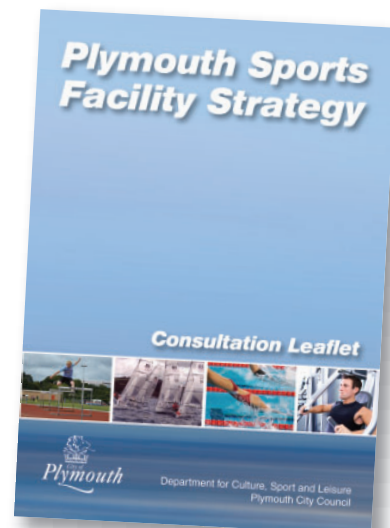
Plymouth City Council is inviting local residents, sports clubs, schools and anyone else with an interest in improving local sporting opportunities to comment on a draft sports facility strategy for the city.

The strategy will lay the foundations for developing the range and quality of sporting facilities in the city over the next 10 to 15 years, with the overall objective of raising levels of physical activity.

Recent surveys show that fewer than half of Plymouth's residents take part in any kind of fitness or sporting activity and under a quarter do the recommended three 30-minute sessions a week.

Among the proposals being considered (in addition to facilities being provided at the new Life Centre) are:

- A network of indoor sports hubs that will act as 'satellites' to the Life Centre
- Replacement or improvement of indoor sports facilities at various schools
- A swimming pool to serve Plymstock, Elburton and Sherford
- Synthetic turf pitches to serve the St Budeaux, Whitleigh, Southway and Plympton areas (at school sites)
- New pitches for hockey
- New, indoor '3G' pitch (rubber crumb) for football, particularly for juniors, girls and disability groups
- High quality, floodlit artificial tennis courts and a 'pay and play' indoor tennis centre
- New outdoor bowling greens
- New, larger ice rink to replace the one at Plymouth Pavilions
- Training and competition venues for gymnastics, table tennis and volleyball
- Improved athletics facilities and development of training facilities in the north of the city
- A network of climbing walls



To view the draft strategy and share your comments visit www.plymouth.gov.uk/sportsfacilitystrategy. A leaflet summarising the key elements of the strategy, with a comments form, is also available – email peter.kelley@plymouth.gov.uk or write to Culture, Sport and Leisure, FREEPOST (PY1415), Plymouth PL1 2ZZ.

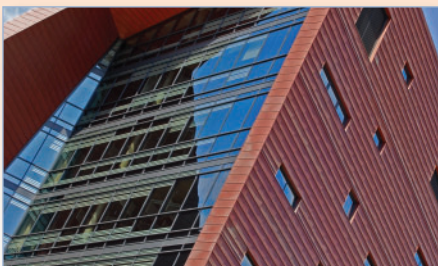
Comments must be received by Friday 22 January 2010. Feedback received will then be considered in preparing the final strategy.

World Town Planning Day

This year marks the 60th anniversary of the foundation of World Town Planning Day. It was established in Argentina in 1949 by the late Professor Carlos Maria della Paolera of the University of Buenos Aires founder of the Instituto Superior de Urbanismo.

His aim was to 'advance public and professional interest in planning both locally and abroad' and create 'a special day to recognise and promote the role of planning in creating liveable communities'.

This year Planning Services are working with the University of Plymouth to encourage students to get more involved in influencing planning decisions in the city.



Local Validation List

Planning Services are creating a Local Validation List which will set out what information applicants are required to include when they make an application. We are expecting to consult on a draft document within the next couple of months.

This document is important to anyone who may submit an application to the Planning Service in Plymouth. It will affect the way that we register applications and the information that will be required before the application can be made valid and considered.

If you would like to be involved in the consultation process then please contact planningconsents@plymouth.gov.uk or call 01752 304366.

Planning diary of events...

All events are free and open to the public.

If you have any questions please contact Sharon Sheppard on 01752 307893

| | |
|-------------------------------------|---|
| 6 November – 18 December | Make your comments on the Development Guidelines Supplementary Planning Document |
| Thursday 12 November | Planning Committee, Council House 2.30pm |
| Friday 21 November | Development Guidelines SPD, Drake Circus 9-6pm |
| Saturday 22 November | Find out more about Building Control, Drake Circus 9-5pm |
| Thursday 10 December | Planning Committee, Council House 2.30pm |

Please note that all these events may be subject to change, please call to confirm details before attending.

What else should be in the newsletter?

This newsletter should be useful for you – if it's not what should it have in it? Let us know by contacting us.

Keep in touch...

Planning Applications:

www.plymouth.gov.uk/planningapplications
planningconsents@plymouth.gov.uk
01752 304366

Local Development Framework:

www.plymouth.gov.uk/ldf
ldf@plymouth.gov.uk
01752 305477

Building Control

www.plymouth.gov.uk/buildingcontrol
buildingcontrol@plymouth.gov.uk
01752 304343

Planning Services, Department of Development, Plymouth City Council, Civic Centre, Plymouth PL1 2AA

**If you would like this newsletter in an alternative format please call
01752 305477.**

