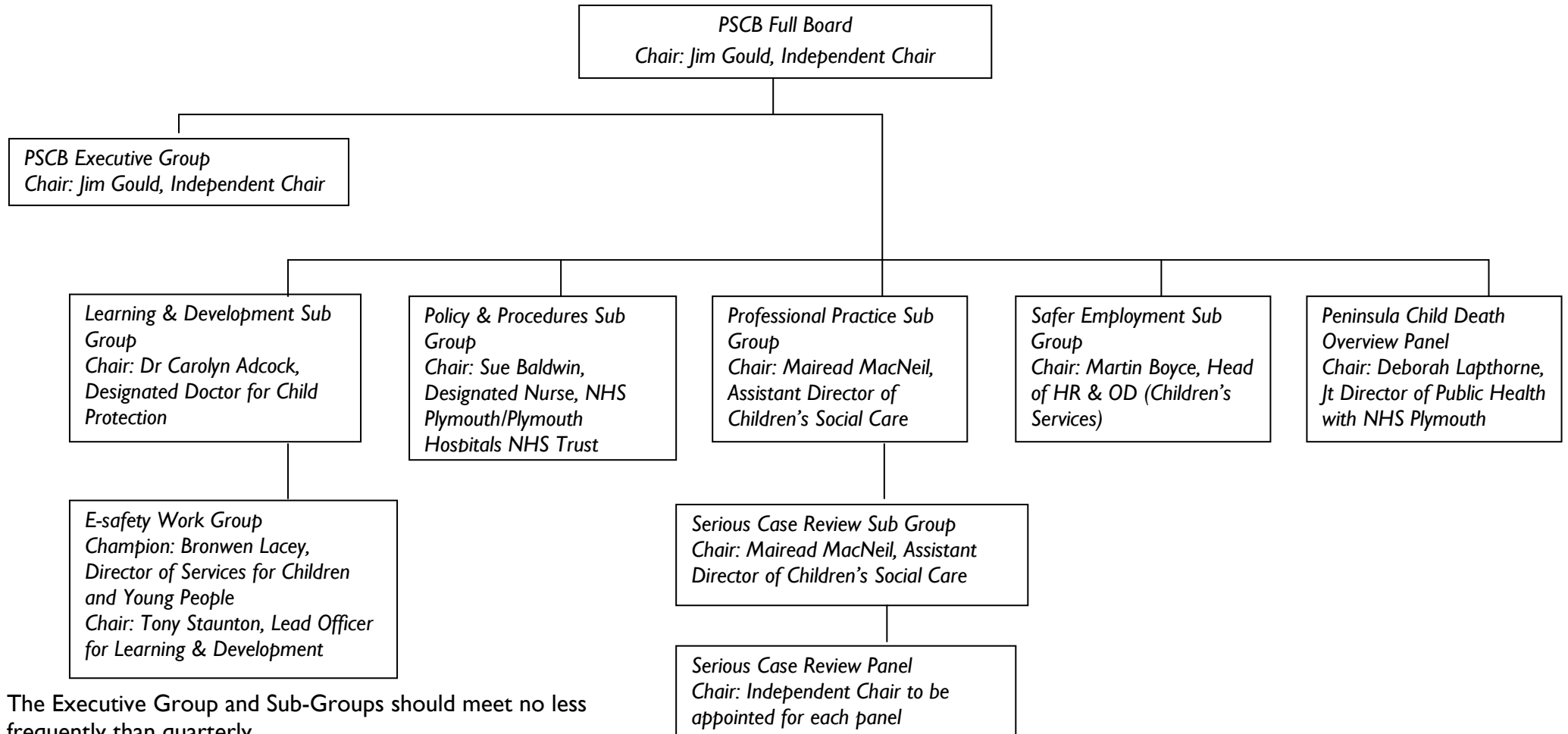


Structure of the PSCB

The entirety of the PSCB Membership is listed in Section 2 of the Business Plan 2011 to 2014. The Full Board will meet quarterly and will be supported by an Executive Group with membership made up of The Independent Chair, Vice Chair, Sub Group Chairs, the Director of Services for Children and Young People, the Safeguarding Manager, Safeguarding Business Manager, the PSCB Equality and Diversity Lead, Police representative and a representative from the Independent/Voluntary Sector.



The Executive Group and Sub-Groups should meet no less frequently than quarterly.

The Serious Case Review Sub Group will be initiated by the Professional Practice Sub Group as and when required.

The Serious Case Review Panel will be convened once a Serious Case Review has been agreed by the Serious Case Review Sub Group.