

A **sustainable linked community** is made by balancing and linking the social, economic and environmental parts of a neighbourhood to meet local people's needs today and in future.

Each **sustainable linked community** is different and should reflect its location, history and identity, but they all share the eight common features that are identified inside this leaflet.

Plymouth City Council's Local Development Framework looks at ways to make every neighbourhood a sustainable linked community in 15 years time.

Please contribute your ideas and help shape Plymouth's future. Find out when and where you area will be discussed at www.plymouth.gov.uk/ldf

Please note: This consultation is for the Issues and Options stage for the Sustainable Neighbourhood Development Plan Document which forms part of the Local Development Framework.

your place, your future

Help shape Plymouth's tomorrow...

June 2007 - June 2008

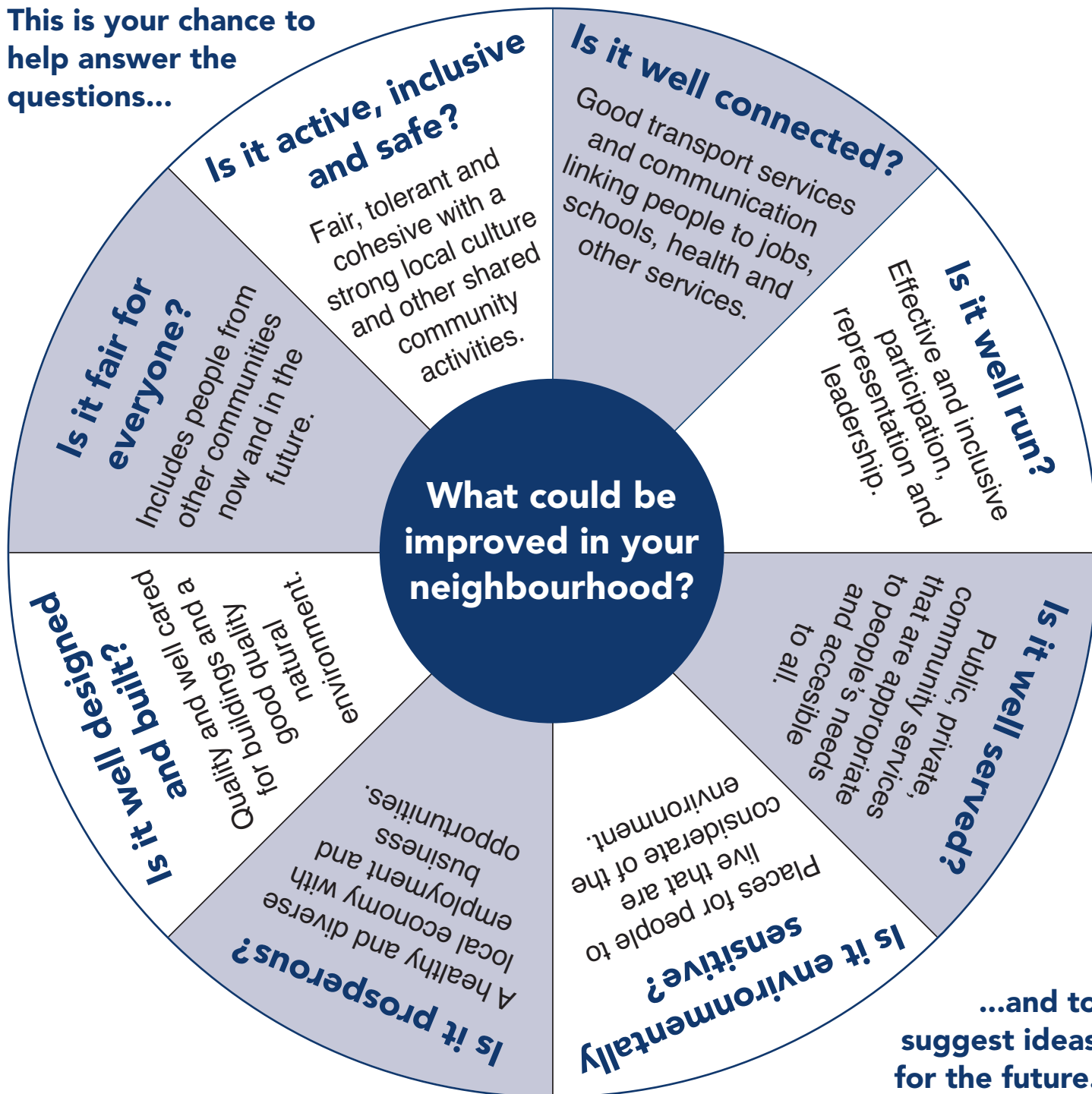
What do you want your neighbourhood to be like in 15 years time?

Contact us to find out when events are happening in your area.

Strategy Unit
Department of Development
Plymouth City Council
Civic Centre
Plymouth PL1 2AA
Tel: 01752 305477
Email: ldf@plymouth.gov.uk
www.plymouth.gov.uk/ldf



This is your chance to help answer the questions...



...and to suggest ideas for the future.