

JOINT LOCAL PLAN

EVIDENCE DOCUMENT



West Devon
Borough
Council



South Hams
District Council

Plymouth Greenspace Policy Development Process (Post Examination Version) August 2018

I. Introduction

- I.1. This document replaces document EN31 on the Public Examination Library. Its purpose is to explain the process of creating the greenspace policies and local designations for the Plymouth Policy Area (PPA) in the Plymouth and South West Devon Joint Local Plan. This document forms part of the evidence base for the Joint Local Plan developed by Plymouth City Council, South Hams District Council and West Devon Borough Council.
- I.2. The greenspace policies are an essential part of the future of the sub-region given that there are plans for ambitious growth in housing and employment.
- I.3. In the submitted version of The Plymouth and South West Devon Joint Local Plan had allocations for Strategic Green Spaces and policies for Local Green Space and Neighbourhood Green Space within the PPA. All these sites are shown on **Plan I**.
- I.4. During the hearings of the Joint Local Plan the Local Green Space (LGS) designation and its supporting evidence base was discussed. The inspectors' Post Hearing Advice (EXC15) expressed concern that the Councils' methodology and overall assessment for LGS designation has not been sufficiently rigorous to comply with national policy, and presented two options for moving forward. The Councils have accepted Option One, which involves removing all Local Green Space designations from the plan, and consequential amendments to the plan.
- I.5. The hierarchy for local green space designations in the PPA in the submission version of the Plan was based on three sets of evidence base as follows:
 - Strategic Green Spaces (SGS) – Plymouth Open Space Assessments (POSA) and site specific evidence base documents that provided additional information in the forms of supplementary studies, Masterplans and delivery documents.
 - Local Green Space (LGS) – the evidence for these sites utilised POSA and the Landscape Studies but decisions on which sites were included as an LGS was based on the LGS specific nomination and consultation process that was seeking to meet the NPPF requirement relating to LGS.
 - Neighbourhood Green Spaces (NGS) – Plymouth Open Space Assessment was used to identify and justify the designation of these sites.
- I.6. As the Local Green Space designations are to be removed from the JLP, with Neighbourhood Plans or future DPDs forming the mechanism to deliver LGS designations in the future, a revised hierarchy for green spaces in the Plymouth Policy Area of the JLP is required. However, the JLP will still need to incorporate LGSs within its overall hierarchy of green spaces as set out in Policy SPT11, and include a specific criteria based policy for LGSs, in order to ensure that an appropriate policy framework is in place for when Neighbourhood Plans and other DPDs do designate sites.
- I.7. The revised hierarchy for local designations within the PPA needs to provide appropriate protection to those green spaces that deliver the most benefits and services for communities, as part of the network of green spaces that make up Plymouth's green infrastructure. This is necessary to ensure the sustainability of the JLP's growth agenda. The revised greenspace hierarchy will be justified by the POSA and site specific information for the SGS sites as follows:

- Strategic Green Space – POSA and site specific evidence base documents that provided additional information in the forms of supplementary studies, Masterplans and delivery documents (no change from the submitted version of the Plan).
- New ‘City Green Space’ (CGS) designation – POSA to identify and justify the designation of these sites.
- Neighbourhood Green Space – POSA to identify and justify the designation of these sites (no change from the submitted version of the Plan).

1.8. In the revised approach to the identification of sites and the green space hierarchy the POSA forms the basis of the evidence for all sites. The City and Neighbourhood sites are both identified utilising the evidence from this study, what distinguishes sites from being identified as City or Neighbourhood is the level of services they deliver for communities and this has been determined by the ‘value score’ they received in the assessment. Further detail on how this value score was determined and utilised is detailed in the sections below.

2. Strategic Green Space

- 2.1. The starting point for Strategic Green Space allocations was the [Green Infrastructure Delivery Plan 2010](#) that identified strategic Green Infrastructure sites across Plymouth and extending into the South Hams. This followed principles later strengthened in NPPF paragraphs 99, 114. The SGS formed part of the POSA.
- 2.2. It was proposed in the submission version of the JLP that six sites were designated as Strategic Green Spaces (SGS). The removal of the LGS layer of designation in the hierarchy does not affect these sites therefore no change is proposed. The six SGS sites have been identified due to their multi-functional nature that will deliver benefits for communities, wildlife and growth projects. A proactive approach will be taken to their delivery and works on these sites will be aligned to the timing of areas growth. They will help to mitigate any potential recreational impacts on the South Dartmoor Woods SAC and protected landscapes. **Plan 1 & 2** show the location of the six sites, they are as follows:
- **Central Park** – Historic Park within the centre of the City containing a mix of formal sport, active recreation, play as well as natural wildlife rich areas.
 - **Saltram Countryside Park** – Large scale Countryside Park including the Historic Saltram Estate, Plym estuary and agricultural land. Extensive and diverse natural and historic assets and a focus for recreation.
 - **Sherford Community Park** – New park to be delivered as part of the new community. It will contain wildlife mitigation and enhancement, a community farm, water management features, significant tree planting and an extensive network of recreational routes.
 - **Derriford Community Park** – New park with significant wildlife and heritage assets that will be opened up to deliver significant recreational resource in the north of the City and will be a focus for environmental education.
 - **The Plym Valley** - Extensive landscape, wildlife and recreational resource on the edge of the City. New recreational routes will be delivered and the sites important heritage and wildlife features will be protected and enhanced

- **Woolwell Community Park** - New park to be delivered as part of the new community. It will provide a landscape buffer to the wider countryside and will contain significant levels of wildlife enhancements and new recreational routes.

2.3. A number of the SGS sites currently proposed were originally detailed in Area Action Plans as follows:

- Saltram Countyside Park –North Plymstock AAP (Adopted)
- Sherford Community Park – Sherford AAP (Adopted)
- Central Park – Central Park AAP (Adopted)
- Derriford Community Park

2.4. Since the publication of the GI Delivery Plan further work has been undertaken on many of the sites. Table I below details the further work that has been undertaken.

Table I – Strategic Greenspace Evidence Work

| Strategic Greenspace | Evidence Base Document | Document Link |
|---------------------------------|---|---|
| Derriford Community Park | <u>Masterplan Document</u> | http://web.plymouth.gov.uk/homepage/environmentandplanning/natureconservation/natureprojects/greeninfrastructureproject/dcp/dcpdeliveringthepark.htm |
| | <u>Topic Papers:</u> 1. One Planet Centre 2. Landscape Access & Recreation 3. Biodiversity 4. Community Food Growing 5. Farming 6. Historic Landscape and Archaeology | http://web.plymouth.gov.uk/homepage/environmentandplanning/natureconservation/natureprojects/greeninfrastructureproject/dcp/dcpdeliveringthepark.htm |
| Saltram Countryside Park | <u>Masterplan Document</u> | http://web.plymouth.gov.uk/de/textonly/homepage/environmentandplanning/natureconservation/natureprojects/greeninfrastructureproject/saltrammasterplan/saltrammasterplanconsultation.htm |
| | <u>Delivery Plan</u> | http://web.plymouth.gov.uk/de/textonly/homepage/environmentandplanning/natureconservation/natureprojects/greeninfrastructureproject/saltrammasterplan/saltrammasterplanconsultation.htm |
| | <u>Topic Papers:</u> 1. Biodiversity | http://web.plymouth.gov.uk/de/textonly/homepage/environmentandplanning/naturecon |

| | | |
|--------------------------------|---|---|
| | 2. Farming and Landownership 3. Historic Landscape 4. Landscape Character Area 5. Recreation and Access, | ervation/natureprojects/greeninfrastructureproject/saltrammasterplan/saltrammasterplanconsultation.htm |
| Central Park | <u>Masterplan Document</u> | http://web.plymouth.gov.uk/homepage/environmentandplanning/planning/deliveringchange/centralparkmasterplan.htm |
| Sherford Community Park | Planning application documents. Specifically The Natural Environment Vision Statement and Community Park Implementation Plan. | Natural Environment Vision Statement - 49/0351/15/DIS Community Park Implementation Plan - 49/1488/15/DIS |
| Plym Valley | Plym Valley Landscape Character and Heritage Assessment. | Link not available. |
| Woolwell Community Park | New Strategic Green Space. | |

2.5. The Strategic Green Space site boundaries have been set in the Joint Local Plan to reflect change since the GI Delivery Plan and previous AAPs to reflect the situation in 2017. The boundary change details are provided in Table 2:

Table 2 – Description of SGS Site Boundaries

| Strategic Greenspace | Boundary Description | Any changes in JLP |
|---------------------------------|--|---|
| Derriford Community Park | The Derriford Community Park boundary was finalised through the Master planning process conducted in 2012. | No changes proposed in the JLP boundary. |
| Saltram Countryside Park | The Park boundary was first established in the North Plymstock AAP. | Increase in Park boundary. The fields to the north of the Saltram Meadow development that forms part of the setting to the Registered Park and Garden have been included in the JLP SGS site boundary. The Plym Estuary is also included in the SGS boundary. This change was first proposed in the Saltram Countryside Park Masterplanning work in 2011. |
| Central Park | The Park boundary was first established in the Central Park AAP. | Increase in Park boundary. The housing developments previously proposed on the edges of the Park have now been removed and those areas are now designated as part of the Park. |

| | | |
|--------------------------------|--|---|
| Sherford Community Park | The Park boundary was established through the grant of the outline planning permission for the new community. | No changes proposed in the JLP boundary. |
| Plym Valley | The GI delivery plan proposed a boundary for the Plym Valley. | Substantial increase in Park boundary. The JLP process enabled a review of the Plym Valley and it has been extended to include all of the wooded valley of the Plym. It extends to Woolwell in the North and Coypool in the south. To the east and west it follows the line of the woodland edge. To the south it incorporates the land to north of Plympton. |
| Woolwell Community Park | No specific boundary applied to the Park in the JLP as it forms part of the Woolwell new community allocation. | Further design work is required to determine the exact position of the new community park in relation to the development. Instead a criteria based policy has been written which details what the Park will need to deliver. |

3. City Green Spaces and Neighbourhood Green Spaces

- 3.1. In response to removal of LGS sites from the network of green space sites within the JLP (a LGS policy will remain for use if LGS sites come forward in Neighbourhood Plan or other DPDs) it is proposed that a new 'City Green Space' designation is included in Policy DEV29. This will prevent a policy vacuum for important greenspace sites in the city that deliver essential services for communities. These sites also form part of the city's green infrastructure (GI) network. Not providing an alternative policy provision would leave gaps within the citywide network approach, which would be in conflict with the NPPF and NPPG .
- 3.2. Open space is defined in the NPPF¹ as space of public value, not just land, but areas of water – rivers, canals, lakes and reservoirs – which provide visual amenity and offer opportunities for sport and recreation. The delivery of multifunctional open spaces for wildlife, health, recreation, flood risk mitigation, carbon storage and food production is highlighted as a core planning principle of the NPPF. Paragraph 73 emphasises the importance of access to high quality open spaces for the health and well-being of communities; it stresses the need for robust and up-to-date assessments of local open space, sports and recreation facility, demand and opportunity, assessments which identify specific deficits or surpluses to determine what is needed where.
- 3.3. The NPPF is supported by the National Planning Practice Guidance (NPPG) which aims to provide simplified guidance on how to implement statutory provisions. However the NPPG does not currently recommend an appropriate guidance document for the assessment of open spaces or how to develop a network approach to their planning. Although the former PPSs and PPGs have been revoked, the best practice guidance and companion guides are still extant. As a result the former PPG17 Companion Guide is therefore still widely

¹ References to the NPPF in this document relates to the original NPPF 2012 under which this JLP is being considered but the points are reflected in the new NPPF 2018.

acknowledged as the most robust methodology for assessment of open space provision and guidance. PPG17 was therefore used to inform the POSA evidence base development that informs the proposed CGS and NGS policy designations.

- 3.4. The POSA provides the evidence base for City and Neighbourhood sites. To distinguish whether a site is a City or Neighbourhood site, the 'value score' for each site has been utilised and a threshold set. The value scores relates not to monetary value but to the value of a site to people and the environment (e.g. biodiversity, conservation) to its cultural and heritage value and its strategic value.
- 3.5. The site audits that form a key part of the POSA were completed after site surveys of every green space site in the city. The detail of how this was conducted and the information that was evaluated is explained in detail in the POSA section 7 and appendix 4 (of the main document) and the individual site audits for each of the green spaces are included in Appendix 2 – Site Assessments. The majority of these sites were also assessed in 2000 and 2004 as part of Green Space Assessments (GSA) so there is a significant historic evidence base justifying the importance of these green space sites to the city. The 2000 and 2004 GSA also had a hierarchical approach to green spaces across the city identifying the different levels of contribution sites delivered.
- 3.6. Utilising information within best practice guidance it has been determined that value mainly relates to, context (linked to accessibility), level and type of use (the primary purpose and associated use) and wider benefits (including well-being, biodiversity, social inclusion, sense of place etc.). The site audit included information that was used to calculate a value score for each site.
- 3.7. Threshold scores specific to different types and sizes of green space were then set, if a site scored above this threshold it was considered to be of high value. For example a small park would need a value score of 25 or above to be classed as high value. This threshold score was determined by identifying the characteristics and features a small park or garden should provide to be consider high value. Further detail on this process and the methodology used to set the value scores for each type can be found in Appendix 4 of the main POSA document (pg81-88). A summary of each of the threshold scores by green space type can be found in table 4 at the end of this document. This table is an extract of table 7.4 from the POSA.
- 3.8. Please note the POSA also details quality scores for each site. We have not used the quality scores within the POSA for determining whether a site is a CGS or NGS as quality only relates to publicly accessible green spaces and a quality score can be changed by investment in a site. The value score is more closely aligned to the sites fundamental ability to deliver benefits and services for Plymouth and its communities.
- 3.9. In setting the new Plymouth specific green space hierarchy we have used these threshold scores to determine whether a site is classed as a CGS or NGS. The justification for this is that using the POSA methodology if a site scored equal to or above the threshold score for its size and type it is classified as 'high value' and the sites of high value should be afforded a higher level of policy protection. It therefore follows that sites that score below the threshold score for their type and size do not have the same level of value and therefore are not afforded as higher level of protection.

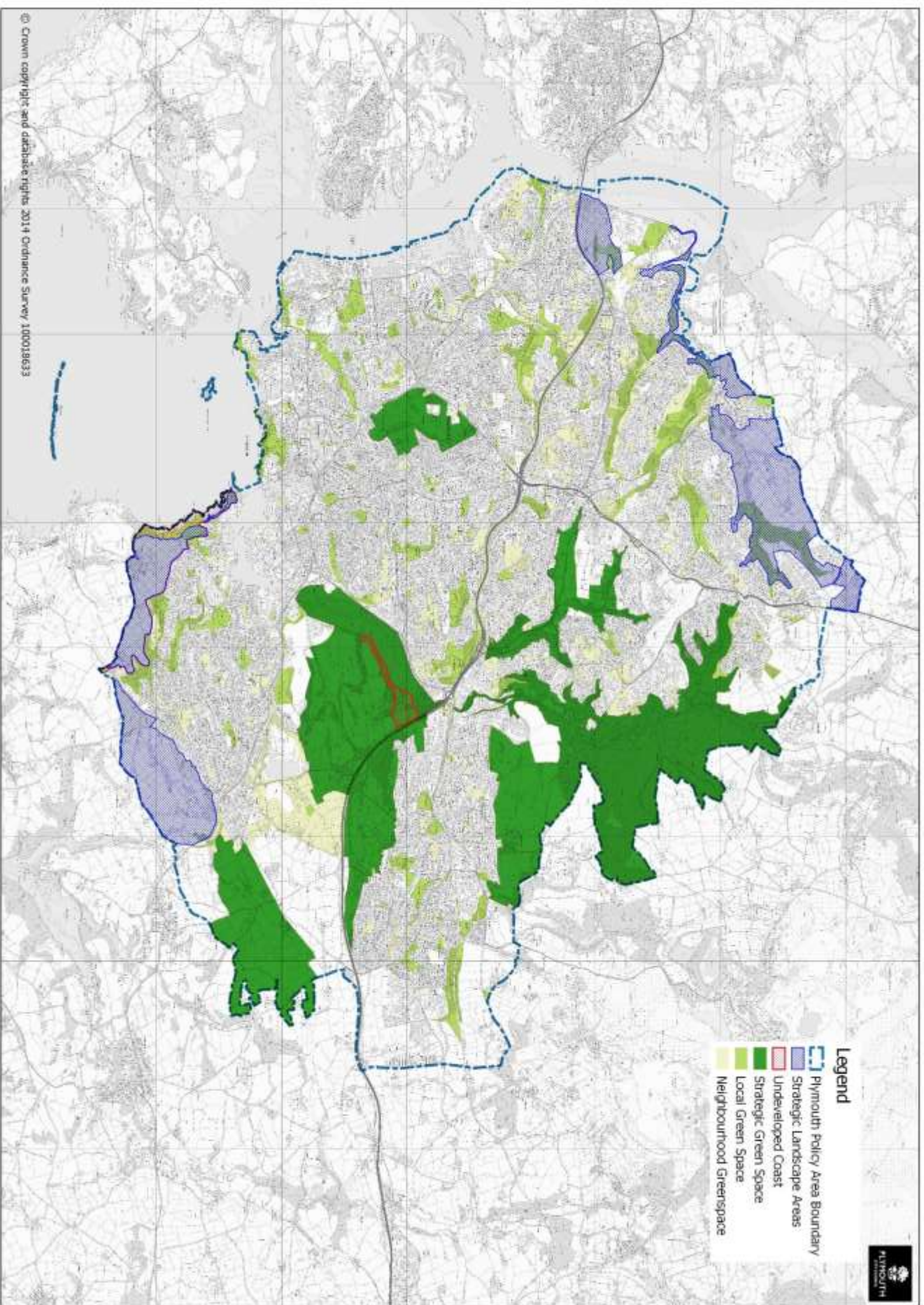
3.10. In summary the justification for designating a site as a CGS or NGS are as follows:

- City Green Spaces – all green spaces that scored above the threshold score for their size and typology as detailed in the methodology within the POSA, plus all sites that have an intimate coastal location. The inclusion of coastal sites in this category is due to the fact that as a waterfront City any green space that provides an interface with the maritime/estuarine environment is important to Plymouth’s sense of place, culture and heritage.
- Neighbourhood Green Spaces – all green spaces sites that scored below the threshold score for their size and typology.

4. The Greenspace Network: A Summary

- 4.1. **Plan 2** shows the amended network of strategic, local and neighbourhood greenspaces that cross the Plymouth Policy Area. There are 6 Strategic Greenspace sites, 105 City Green Space sites and 303 Neighbourhood Green Spaces. This shows the changes from the submission version of the plan (shown on Plan 1) which had 6 Strategic Greenspace sites, 169 Local Green Space sites and 458 Neighbourhood Green Spaces. Please note the total number of green spaces have reduced due to the green space boundaries now being solely based on the POSA evidence and not with the addition of the LGS evidence base.
- 4.2. **Table 3** includes all the green space sites assessed in the POSA. It details the proposed post hearing policy allocation or designations compared against the submission version of the Plan.

Plan 1 Strategic, Local and Neighbourhood Green Spaces within the Plymouth Policy Area - SUBMISSION VERSION



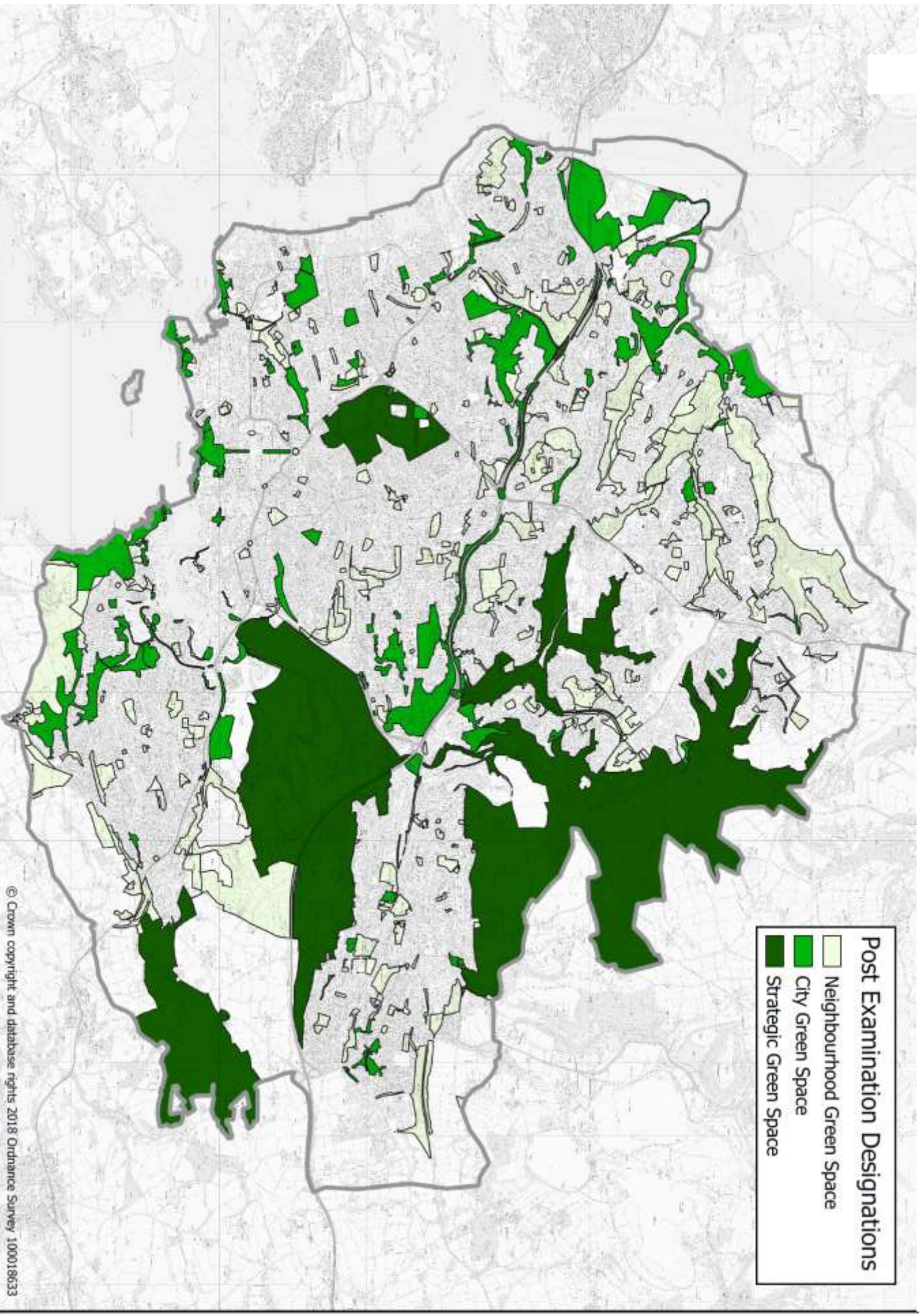


Table 3: Comparison of Submission and Post-Examination Green Space Designations

| POSA Ref | Site Name | Submission Designation | Post Examination Designation |
|-----------------|---|-------------------------------|-------------------------------------|
| 3 | Murata site | Neighbourhood | Neighbourhood |
| 4 | Woodford (North Plympton) | Neighbourhood | Neighbourhood |
| 5 | Land north of Staddon Lane and Hooe Lake | Neighbourhood | Neighbourhood |
| 7 | Radford Woods | LGS | City |
| 10 | Ham Wood | LGS | City |
| 12 | Lower Plym Valley/ Leigham Woods | LGS | City |
| 13 | Woodland Wood Local Nature Reserve | LGS | Neighbourhood |
| 14 | Kings Tamerton South | LGS | Neighbourhood |
| 15 | Efford Marsh Local Nature Reserve | LGS | City |
| 16 | Southway/Tamerton Foliot Fields | Neighbourhood | Neighbourhood |
| 17 | Hollycroft Wood | Neighbourhood | Neighbourhood |
| 18 | Southway Valley LNR | LGS | Neighbourhood |
| 19 | Harewood Crescent Open Space | LGS | Neighbourhood |
| 20 | RNAD Ernesettle | LGS | City |
| 22 | Woodland Wood Open Space | Neighbourhood | Neighbourhood |
| 23 | Crownhill Fort | LGS | Neighbourhood |
| 24 | Tintagel Crescent Playground and Nature Trail | LGS | Neighbourhood |
| 25 | Budshead Creek | LGS | City |
| 26 | Cann Woods Local Nature Reserve | LGS | Neighbourhood |
| 27 | Hooe Lake | LGS | City |
| 29 | Forder Valley Private Woodland | Neighbourhood | Neighbourhood |
| 30 | Tamerton Lake | LGS | City |
| 31 | Parkway Sports Club | LGS | Neighbourhood |
| 32 | Whitleigh Wood Local Nature Reserve | LGS | Neighbourhood |
| 33 | Noverosick Rd | Neighbourhood | Neighbourhood |
| 34 | Colesdown Hill | Neighbourhood | Neighbourhood |
| 35 | Fields, SE of Elburton | Neighbourhood | Neighbourhood |
| 37 | Land at Ernesettle | LGS | City |
| 38 | Warren Point | LGS | City |
| 39 | Mount Batten | LGS | City |
| 40 | Oreston Railway Line (Cycle Path) | Neighbourhood | City |
| 41 | Tamerton Foliot Agricultural Land | Neighbourhood | City |
| 42 | Budshead Wood Local Nature Reserve | LGS | City |
| 43 | Jennycliff | Neighbourhood | City |
| 44 | Billacombe Open Space | LGS | City |
| 45 | Plymouth Road Central Reservation | Neighbourhood | Neighbourhood |
| 47 | Elburton Villa F.C and area | LGS | Neighbourhood |
| 48 | Devonport Park | LGS | City |

| POSA Ref | Site Name | Submission Designation | Post Examination Designation |
|-----------------|-----------------------------------|-------------------------------|-------------------------------------|
| 49 | The Hoe | LGS | City |
| 52 | Derriford Roundabout | Neighbourhood | Neighbourhood |
| 53 | Efford Valley | LGS | City |
| 54 | Tothill Park | LGS | City |
| 55 | Blackies Wood | Neighbourhood | City |
| 56 | Miller Way | LGS | Neighbourhood |
| 57 | Barne Barton Sports pitches | Neighbourhood | Neighbourhood |
| 58 | Hoe Foreshore | LGS | City |
| 60 | Weston Mill Cemetery | LGS | City |
| 61 | Radford Park | LGS | City |
| 62 | Rashleigh Avenue Woods | LGS | Neighbourhood |
| 64 | Manadon Park | Neighbourhood | Neighbourhood |
| 65 | Crownhill Open Space | LGS | Neighbourhood |
| 66 | Efford Cemetery | LGS | City |
| 67 | Kinterbury Creek | LGS | City |
| 68 | Devil's Point | LGS | City |
| 69 | Weston Mill Sports Ground | Neighbourhood | Neighbourhood |
| 70 | Plymouth Parkway FC & Open Space | Neighbourhood | Neighbourhood |
| 71 | Victoria Park | LGS | City |
| 73 | Lipson Comp Playing Field | Neighbourhood | Neighbourhood |
| 74 | Stonehouse Playing Field | LGS | Neighbourhood |
| 75 | Chivenor Avenue | Neighbourhood | City |
| 76 | Aylesbury Open Space | Neighbourhood | Neighbourhood |
| 77 | Greenacres (Woodland Trust) | Neighbourhood | Neighbourhood |
| 78 | Knapps Close Cops | Neighbourhood | Neighbourhood |
| 79 | Brickfields | Neighbourhood | Neighbourhood |
| 80 | Jews Wood | Neighbourhood | Neighbourhood |
| 81 | Sheepstor Road | Neighbourhood | Neighbourhood |
| 82 | Duncombe Avenue Woods | Neighbourhood | Neighbourhood |
| 83 | Staddiscombe Open Space | Neighbourhood | Neighbourhood |
| 84 | Chaddlewood Open Space | LGS | Neighbourhood |
| 85 | Embankment Rd | Neighbourhood | City |
| 86 | Manadon Wood & Playing field | Neighbourhood | Neighbourhood |
| 88 | Trefusis Park | LGS | Neighbourhood |
| 89 | All Saints Academy School Grounds | LGS | Neighbourhood |
| 90 | Serts Farm & Woods | LGS | Neighbourhood |
| 91 | Billington Close | Neighbourhood | Neighbourhood |
| 93 | Marsh Mills Recreation Area | Neighbourhood | City |
| 94 | Bladder Meadow | Neighbourhood | City |
| 95 | West Park | Neighbourhood | City |
| 96 | Southway Drive | Neighbourhood | Neighbourhood |
| 97 | Plymstock School Grounds | Neighbourhood | Neighbourhood |
| 98 | Newnham Road Open Space | LGS | Neighbourhood |

| POSA Ref | Site Name | Submission Designation | Post Examination Designation |
|-----------------|------------------------------------|-------------------------------|-------------------------------------|
| 99 | King George V Playing Fields | Neighbourhood | Neighbourhood |
| 102 | Billacombe Bus Depot | Neighbourhood | City |
| 104 | Southway Valley Open Space | Neighbourhood | Neighbourhood |
| 105 | Plympton Pathfields | LGS | Neighbourhood |
| 106 | Redwood Drive | LGS | Neighbourhood |
| 107 | Mount Wise | LGS | City |
| 108 | Oreston Rd Cliff | Neighbourhood | Neighbourhood |
| 109 | St Mary's Playing Fields | LGS | Neighbourhood |
| 110 | Grantley Gardens | LGS | Neighbourhood |
| 111 | Coombe Dean Comp Playing Fields | Neighbourhood | Neighbourhood |
| 112 | Southway Valley Playing Fields | Neighbourhood | City |
| 113 | Greenwood Park Road Open Space | Neighbourhood | Neighbourhood |
| 115 | Staddon Heights | Neighbourhood | Neighbourhood |
| 116 | Widewell Playing Fields | Neighbourhood | Neighbourhood |
| 117 | Old Cattedown Road | Neighbourhood | City |
| 118 | Egguckland Vale Community Woodland | Neighbourhood | Neighbourhood |
| 120 | Harewood House Playing Fields | LGS | Neighbourhood |
| 121 | Radford Quarry | LGS | City |
| 122 | Shakespeare Primary School | Neighbourhood | Neighbourhood |
| 123 | Land East of Dark Lake View | Neighbourhood | Neighbourhood |
| 124 | Blackstone Close Woodland | Neighbourhood | Neighbourhood |
| 125 | Linear Park | LGS | Neighbourhood |
| 126 | Glen Road South | LGS | City |
| 127 | Dean Cross Park | LGS | Neighbourhood |
| 128 | Brickfields Open Space | Neighbourhood | Neighbourhood |
| 129 | Land off Madeira Road | LGS | City |
| 130 | St. Peter's Convent | LGS | Neighbourhood |
| 131 | Deveron Close Open Space | LGS | Neighbourhood |
| 132 | Hooe Lake Quarry, Barton Road | Neighbourhood | Neighbourhood |
| 133 | St Maurice Road | Neighbourhood | City |
| 136 | Newnham Meadows District Park | LGS | Neighbourhood |
| 138 | Whitleigh Campus Schools | Neighbourhood | Neighbourhood |
| 139 | Wollaton Grove Playing Fields | Neighbourhood | Neighbourhood |
| 140 | Breakwater Hill Green Space | Neighbourhood | Neighbourhood |
| 141 | Beaumont Park | LGS | Neighbourhood |
| 142 | Notre Dame School grounds | LGS | Neighbourhood |
| 143 | Southway Community Allotments | LGS | Neighbourhood |
| 144 | Longdown Gardens | Neighbourhood | Neighbourhood |
| 145 | Freedom Fields | LGS | City |
| 146 | Bearsdown Road | Neighbourhood | Neighbourhood |
| 147 | Burrow Hill Open Space | Neighbourhood | Neighbourhood |
| 148 | Larkham Lane Playing Fields | Neighbourhood | Neighbourhood |
| 149 | Devonport High School For Boys | LGS | Neighbourhood |

| POSA Ref | Site Name | Submission Designation | Post Examination Designation |
|-----------------|--|-------------------------------|-------------------------------------|
| 150 | Enesettle Community School | Neighbourhood | Neighbourhood |
| 151 | Kendal Place Allotments | LGS | Neighbourhood |
| 152 | Egguckland Recreation Ground | LGS | Neighbourhood |
| 153 | Blindman's Wood | Neighbourhood | Neighbourhood |
| 154 | Milehouse Open Space | Neighbourhood | Neighbourhood |
| 155 | Horsham Lane | LGS | Neighbourhood |
| 156 | Mays & Frys Allotments | LGS | Neighbourhood |
| 157 | Penlee Eco Park | Neighbourhood | Neighbourhood |
| 158 | Butt Park Playing Fields | LGS | Neighbourhood |
| 160 | Damerals Field | Neighbourhood | Neighbourhood |
| 161 | Staddon Lane | Neighbourhood | Neighbourhood |
| 162 | Arcott Lane | Neighbourhood | Neighbourhood |
| 163 | Hartley Pleasure Gardens | LGS | Neighbourhood |
| 164 | Kings Tamerton Playground | Neighbourhood | Neighbourhood |
| 165 | Mount Gould Park | LGS | Neighbourhood |
| 166 | Collings Park Playing Fields | LGS | Neighbourhood |
| 167 | St Leven Recreation Ground | LGS | Neighbourhood |
| 168 | Plymouth College playing field | LGS | Neighbourhood |
| 169 | St Edwards Church Primary | Neighbourhood | Neighbourhood |
| 170 | Fraser Place | Neighbourhood | Neighbourhood |
| 171 | Farm and agricultural land south of Staddiscombe | Neighbourhood | Neighbourhood |
| 172 | Penlee Valley Allotments | LGS | City |
| 173 | Mayflower Academy School Grounds | LGS | Neighbourhood |
| 174 | Littlewood Close Open Space | Neighbourhood | City |
| 175 | Alexandra Park | LGS | City |
| 176 | Laira Emplacement | Neighbourhood | Neighbourhood |
| 177 | Block House Park | LGS | City |
| 179 | Sandy Road wooded verge | Neighbourhood | City |
| 180 | Yealmpstone Open Space | Neighbourhood | Neighbourhood |
| 181 | Eastern King Point | LGS | City |
| 182 | Riverside | Neighbourhood | City |
| 183 | Normandy Way | Neighbourhood | City |
| 184 | Embankment Rd Railway | Neighbourhood | Neighbourhood |
| 185 | Eliot Street and Bridwell Road Allotments | LGS | Neighbourhood |
| 186 | Southway Open Space | LGS | City |
| 187 | Dunstone Woods | LGS | Neighbourhood |
| 188 | Land north of Pleasure Hill Close | Neighbourhood | City |
| 189 | Stuart Road Open Space | LGS | Neighbourhood |
| 190 | Stoke Damerel Community College | Neighbourhood | Neighbourhood |
| 191 | Shaw Way Open Space | Neighbourhood | City |
| 192 | Peacock Meadow | LGS | City |
| 193 | Pike Road | Neighbourhood | City |

| POSA Ref | Site Name | Submission Designation | Post Examination Designation |
|-----------------|---------------------------------------|-------------------------------|-------------------------------------|
| 194 | Northdown Recreation Ground | Neighbourhood | Neighbourhood |
| 195 | Plymouth College Playing Field | Neighbourhood | Neighbourhood |
| 196 | Thornbury Pry School | Neighbourhood | Neighbourhood |
| 197 | Langage buffer | Neighbourhood | Neighbourhood |
| 198 | Dorchester Avenue Open Space | Neighbourhood | Neighbourhood |
| 199 | Ridgeway School Playing Fields | Neighbourhood | Neighbourhood |
| 200 | Jennycliff Lane | Neighbourhood | Neighbourhood |
| 201 | Mutley Park | LGS | Neighbourhood |
| 202 | Berverstone Way Path | Neighbourhood | Neighbourhood |
| 204 | St Marys Church Yard | Neighbourhood | City |
| 205 | Land North of Normandy Hill | Neighbourhood | Neighbourhood |
| 206 | St Budeaux Recreation Ground | Neighbourhood | City |
| 207 | West Hoe Park | LGS | City |
| 208 | Stoke Churchyard | LGS | City |
| 209 | Knowle Avenue Allotments | LGS | City |
| 210 | Glen Road West | LGS | City |
| 211 | Oakfield Terrace Green Space | Neighbourhood | Neighbourhood |
| 212 | Oates Road/ Wolseley Road Open Space | Neighbourhood | Neighbourhood |
| 213 | Brooks Green Centre for Learning | Neighbourhood | Neighbourhood |
| 214 | Old Priory Junior School | Neighbourhood | Neighbourhood |
| 215 | Dunstone Open Space | LGS | Neighbourhood |
| 216 | Honicknowle Green | LGS | City |
| 217 | Norwich Avenue Open Space | Neighbourhood | Neighbourhood |
| 218 | Land east of Duloe Gardens | Neighbourhood | City |
| 219 | Notre Dame School playing fields | Neighbourhood | Neighbourhood |
| 220 | Land South of Chaucer Way | Neighbourhood | Neighbourhood |
| 221 | Millbay Park | LGS | Neighbourhood |
| 222 | Woodland Rear of Milehouse Bus Depot | Neighbourhood | Neighbourhood |
| 223 | Kit Hill Open Space | LGS | Neighbourhood |
| 224 | Brockley Rd Allotments | LGS | City |
| 225 | Chaddle Wood | LGS | Neighbourhood |
| 226 | MOD Sports Ground off St Levans Road | Neighbourhood | Neighbourhood |
| 227 | Bampfylde Way | Neighbourhood | City |
| 228 | Land North of Ham Drive | Neighbourhood | City |
| 229 | Staddiscombe Road | Neighbourhood | Neighbourhood |
| 230 | Open space at Dunstone Primary School | Neighbourhood | Neighbourhood |
| 231 | Mugger Brook Open Space | Neighbourhood | City |
| 232 | Stoke Damerel Primary School | LGS | Neighbourhood |
| 233 | Big Park Millennium Green | Neighbourhood | City |
| 234 | Prince Rock Playing Field | Neighbourhood | City |
| 235 | Disused quarry west of The Old Wharf | Neighbourhood | City |
| 236 | Knowle Avenue Open Space | Neighbourhood | City |
| 237 | Budshead Road Open Space | Neighbourhood | City |

| POSA Ref | Site Name | Submission Designation | Post Examination Designation |
|-----------------|---|-------------------------------|-------------------------------------|
| 238 | Penlee Gardens | LGS | Neighbourhood |
| 239 | Agaton Fort Open Space | Neighbourhood | Neighbourhood |
| 240 | Astor Park | LGS | Neighbourhood |
| 241 | Seymour Rd Allotments | LGS | Neighbourhood |
| 242 | Plympton Castle | Neighbourhood | City |
| 244 | Westfield Open Space | LGS | Neighbourhood |
| 245 | Embankment rd Allotments | LGS | Neighbourhood |
| 246 | Devonport Playing Fields | LGS | Neighbourhood |
| 247 | Oreston Recreation Ground | Neighbourhood | Neighbourhood |
| 249 | Teats Hill | Neighbourhood | City |
| 250 | Land surrounding Nazareth House | Neighbourhood | City |
| 251 | Stoggy Lane Allotments | LGS | Neighbourhood |
| 254 | Mount Tamar School playing field | Neighbourhood | Neighbourhood |
| 255 | Downham Park | LGS | Neighbourhood |
| 256 | Lipson Vale Playing Fields | Neighbourhood | Neighbourhood |
| 257 | Widely School | Neighbourhood | Neighbourhood |
| 258 | The Millfields, Craigie Drive | Neighbourhood | City |
| 259 | Millbay Park Recreation Ground | Neighbourhood | Neighbourhood |
| 261 | Springhill Gardens Open Space | Neighbourhood | Neighbourhood |
| 262 | Lockington Avenue Open Space | LGS | Neighbourhood |
| 263 | Seven Star Lane | Neighbourhood | Neighbourhood |
| 264 | Hooe Allotments | LGS | Neighbourhood |
| 265 | Riverside Primary School Grounds | Neighbourhood | Neighbourhood |
| 266 | Churchstow Walk Open Space | Neighbourhood | Neighbourhood |
| 267 | Great Woodford Drive (South) | LGS | Neighbourhood |
| 270 | Parkstone Lane Open Space | LGS | Neighbourhood |
| 271 | Pattison Drive South | Neighbourhood | Neighbourhood |
| 272 | Land off Finnigan Road | Neighbourhood | City |
| 273 | Dunstone Wood Field | Neighbourhood | Neighbourhood |
| 274 | Glenholt Open Space | Neighbourhood | City |
| 275 | Church Hill Open Space | Neighbourhood | Neighbourhood |
| 276 | Lulworth Drive Open Space | Neighbourhood | Neighbourhood |
| 277 | Beechwood Primary School | Neighbourhood | Neighbourhood |
| 278 | St Boniface's School sports field | Neighbourhood | Neighbourhood |
| 279 | Southway Drive Allotments | LGS | Neighbourhood |
| 280 | Rectory Road Sports Ground | Neighbourhood | Neighbourhood |
| 281 | Woodford Farm Quarry | LGS | Neighbourhood |
| 282 | Devonport High School for Girls Grounds | Neighbourhood | Neighbourhood |
| 283 | Mutton Cove Open Space | LGS | City |
| 284 | School Playing Fields Tamerton Foliot | Neighbourhood | Neighbourhood |
| 285 | Thirlmere Gardens | Neighbourhood | Neighbourhood |
| 286 | Pattison Drive North | Neighbourhood | Neighbourhood |
| 288 | George Junction Open Space | Neighbourhood | Neighbourhood |

| POSA Ref | Site Name | Submission Designation | Post Examination Designation |
|-----------------|---|-------------------------------|-------------------------------------|
| 289 | Broughton Avenue Open Space | Neighbourhood | Neighbourhood |
| 290 | Darwin Crescent Open Space | Neighbourhood | Neighbourhood |
| 291 | Woodford School Playing Fields | Neighbourhood | Neighbourhood |
| 292 | North Road West Open Space | LGS | City |
| 293 | Plymouth College Preparatory School sports ground | Neighbourhood | Neighbourhood |
| 294 | Huxham Close Open Space | Neighbourhood | Neighbourhood |
| 295 | Cookworthy Green | Neighbourhood | Neighbourhood |
| 296 | Lawrence Road | LGS | Neighbourhood |
| 297 | Yealmpstone Farm Primary School | Neighbourhood | Neighbourhood |
| 298 | Austin Farm School | Neighbourhood | Neighbourhood |
| 300 | Pomphlett Pry Playing Field | Neighbourhood | Neighbourhood |
| 301 | Sheridan Road Playing Fields | Neighbourhood | Neighbourhood |
| 302 | Land off Hoe RD | LGS | City |
| 303 | Corporation Road Allotments | LGS | Neighbourhood |
| 304 | Gooswell Pry Playing Fields | Neighbourhood | Neighbourhood |
| 305 | Oakwood Primary School | Neighbourhood | Neighbourhood |
| 306 | Highway verge on North side of Elburton Rd | Neighbourhood | Neighbourhood |
| 307 | Thorn Park | LGS | Neighbourhood |
| 308 | Marine Academy School Grounds | Neighbourhood | Neighbourhood |
| 309 | Bickleigh Down Wood | Neighbourhood | Neighbourhood |
| 312 | Carradale Road Open Space | Neighbourhood | Neighbourhood |
| 314 | Manadon Vale Primary School playing fields | Neighbourhood | Neighbourhood |
| 315 | Fletemoor Road Open Space | Neighbourhood | Neighbourhood |
| 316 | Hooe Green | LGS | City |
| 317 | St Paul's RC Primary School grounds | Neighbourhood | Neighbourhood |
| 318 | Radford Road | LGS | Neighbourhood |
| 319 | Longcause Cemetery | LGS | Neighbourhood |
| 320 | Whitleigh Avenue Open Space | Neighbourhood | Neighbourhood |
| 321 | Yeo Close | Neighbourhood | City |
| 322 | St Budeaux - school playing fields | Neighbourhood | Neighbourhood |
| 323 | Site north of Undercliffe Road, Turnchapel | Neighbourhood | City |
| 324 | Rashleigh Avenue Open Space | LGS | City |
| 325 | Devonport Hill Quarry | LGS | City |
| 326 | Parish Church of Mary & All Saints | Neighbourhood | Neighbourhood |
| 327 | St Joseph's Catholic School grounds | Neighbourhood | Neighbourhood |
| 328 | Langstone Road Allotments | LGS | Neighbourhood |
| 329 | Marsh Mills Open Verge | Neighbourhood | Neighbourhood |
| 332 | Land between Brentford Avenue and Taunton Avenue | Neighbourhood | Neighbourhood |
| 333 | Coverdale Place Allotments | LGS | Neighbourhood |

| POSA Ref | Site Name | Submission Designation | Post Examination Designation |
|-----------------|----------------------------------|-------------------------------|-------------------------------------|
| 334 | Pearn Rd Gdns | LGS | Neighbourhood |
| 335 | Site north of Eastbury Avenue | LGS | Neighbourhood |
| 336 | Old Wharf Allotments | LGS | City |
| 337 | Granby Way Open Space | Neighbourhood | Neighbourhood |
| 338 | Oxford Gardens | LGS | Neighbourhood |
| 339 | Hele's School Front Grounds | Neighbourhood | Neighbourhood |
| 340 | Patna Place | LGS | City |
| 341 | Hooe Pry Playing Fields | Neighbourhood | Neighbourhood |
| 342 | Colebrook Open Space | LGS | Neighbourhood |
| 343 | Thames Gardens | Neighbourhood | City |
| 344 | Mt Batten Tower | Neighbourhood | City |
| 346 | Channel Park Open Space | LGS | Neighbourhood |
| 347 | Compton C of E Playing Fields | Neighbourhood | Neighbourhood |
| 348 | Swan Gardens Trees | LGS | Neighbourhood |
| 349 | Plymbridge Lane SSI | Neighbourhood | Neighbourhood |
| 350 | Aylesbury Crescent | LGS | Neighbourhood |
| 351 | Mount St Pry Playing Field | Neighbourhood | Neighbourhood |
| 353 | Borrington Primary School | Neighbourhood | Neighbourhood |
| 354 | Ridgeway open space | Neighbourhood | Neighbourhood |
| 355 | Parkside Allotments | Neighbourhood | Neighbourhood |
| 356 | St Pancras Church Graveyard | LGS | Neighbourhood |
| 357 | Land south of Byron Avenue | Neighbourhood | Neighbourhood |
| 358 | The Mound (Hoe) | LGS | City |
| 359 | Military Road Road Open Space | Neighbourhood | Neighbourhood |
| 360 | Middlefield Road | Neighbourhood | Neighbourhood |
| 361 | Red Brick Playing field | Neighbourhood | Neighbourhood |
| 362 | St Johns Hooe Church Yard | Neighbourhood | Neighbourhood |
| 363 | Titchy Park | Neighbourhood | Neighbourhood |
| 364 | Oreston Quay | Neighbourhood | City |
| 365 | Sharon Way Open Space | Neighbourhood | Neighbourhood |
| 366 | Exmouth Road Gardens | Neighbourhood | Neighbourhood |
| 367 | Radford Avenue | Neighbourhood | Neighbourhood |
| 368 | Land north of Swift Gardens | Neighbourhood | Neighbourhood |
| 369 | Elburton Pry | Neighbourhood | Neighbourhood |
| 370 | Arcada Rd | Neighbourhood | Neighbourhood |
| 371 | Lipson Vale Pry Playing Field | Neighbourhood | Neighbourhood |
| 373 | St Georges C of E Primary School | Neighbourhood | Neighbourhood |
| 374 | Wheatridge Road Open Space | LGS | Neighbourhood |
| 375 | Lucas Lane Allotments | LGS | Neighbourhood |
| 377 | Kneele Gardens | LGS | Neighbourhood |
| 378 | Plymstock Bowling Club | Neighbourhood | Neighbourhood |
| 379 | Drakes Place Gdns | LGS | Neighbourhood |
| 380 | Land adjacent to Morice Street | Neighbourhood | Neighbourhood |

| POSA Ref | Site Name | Submission Designation | Post Examination Designation |
|-----------------|---|-------------------------------|-------------------------------------|
| 381 | Litchaton Way Playground | LGS | Neighbourhood |
| 382 | Land south of Dunclaire Park | Neighbourhood | Neighbourhood |
| 383 | Adelaide Street Park | Neighbourhood | Neighbourhood |
| 385 | Limetree Open Space | Neighbourhood | Neighbourhood |
| 386 | Douglas Road Open Space | Neighbourhood | Neighbourhood |
| 387 | High Street Primary School Grounds | Neighbourhood | Neighbourhood |
| 400 | Coleman Drive Open Space | Neighbourhood | Neighbourhood |
| 401 | Glen Road East | LGS | City |
| 402 | TORBRIDGE SCHOOL | Neighbourhood | Neighbourhood |
| 403 | Ernesettle Recreation Ground | Neighbourhood | Neighbourhood |
| 406 | Royal William Yard Green | Neighbourhood | City |
| 407 | Mount Wise Cricket Pitch | LGS | Neighbourhood |
| 408 | Coleridge Road | Neighbourhood | Neighbourhood |
| 409 | Dunraven Drive Woods | LGS | Neighbourhood |
| 411 | Merafield rd fields | LGS | Neighbourhood |
| 412 | Staddiscombe Farmland | Neighbourhood | Neighbourhood |
| 413 | Widewell Wood | LGS | Neighbourhood |
| 414 | Dockyard Car Park Verge | Neighbourhood | City |
| 416 | Breakwater Rd open space | Neighbourhood | City |
| 417 | St Budeaux Railway | Neighbourhood | Neighbourhood |
| 420 | Land off Richmond Walk | LGS | City |
| 423 | Chaddlewood Primary School | Neighbourhood | Neighbourhood |
| 424 | Derrys Cross Roundabout | LGS | Neighbourhood |
| 428 | Leigham Primary School | Neighbourhood | Neighbourhood |
| 429 | Whitehaven Way | Neighbourhood | Neighbourhood |
| 430 | Pendeen Close | Neighbourhood | Neighbourhood |
| 431 | Wrigley's | Neighbourhood | Neighbourhood |
| 433 | Glen Park Primary School | Neighbourhood | Neighbourhood |
| 434 | Hooe Lake | LGS | City |
| 435 | Kings T NR | LGS | Neighbourhood |
| 436 | Weston Mill Creek | Neighbourhood | City |
| 438 | Pilgrim Primary School Grounds | Neighbourhood | Neighbourhood |
| 440 | Armada Way | Neighbourhood | City |
| 441 | Charles Cross Roundabout | Neighbourhood | Neighbourhood |
| 443 | Cattedown Roundabout | Neighbourhood | Neighbourhood |
| 444 | Land off Stanley Place | Neighbourhood | Neighbourhood |
| 445 | North Cross Roundabout | Neighbourhood | Neighbourhood |
| 446 | A38 Verge | LGS | City |
| 447 | Rowdons Allotments | LGS | City |
| 448 | Frazer Road Play Area | Neighbourhood | Neighbourhood |
| 450 | Weston Mill Primary School Playing fields | Neighbourhood | Neighbourhood |
| 452 | Stonehouse lawn Tennis Club | LGS | City |
| 453 | Pattinson Drive Open Space | Neighbourhood | Neighbourhood |

| POSA Ref | Site Name | Submission Designation | Post Examination Designation |
|-----------------|--|-------------------------------|-------------------------------------|
| 455 | Woodford Verges | Neighbourhood | Neighbourhood |
| 457 | Land rea of Rochford Crescent | Neighbourhood | Neighbourhood |
| 459 | Land rear of Kinnaird Crescent P/G | Neighbourhood | Neighbourhood |
| 460 | St Budeaux Green | LGS | City |
| 463 | Land at Cameron Way | Neighbourhood | City |
| 466 | White Lady Road Play Area | Neighbourhood | Neighbourhood |
| 469 | Chard Barton Play and Greenspace | Neighbourhood | Neighbourhood |
| 472 | Abney Crescent Wildlife Area North | Neighbourhood | Neighbourhood |
| 473 | Hele's Grammar School (former) | Neighbourhood | Neighbourhood |
| 478 | School - Primary to south of Ordnance Street | Neighbourhood | Neighbourhood |
| 481 | Ham Green Lane Play Area | Neighbourhood | Neighbourhood |
| 482 | Boringdon Road Play Area | LGS | Neighbourhood |
| 500 | Land at Bernice Close | LGS | Neighbourhood |
| 501 | Hemerdon Triangle | LGS | Neighbourhood |
| 506 | Whiteford Road Tennis Club | LGS | Neighbourhood |
| 508 | Waterloo Court | LGS | Neighbourhood |
| 509 | Lopwell Close | LGS | Neighbourhood |
| 510 | Henderson Place Allotments | LGS | Neighbourhood |
| 515 | Pick Pie Plantation | LGS | Neighbourhood |
| 516 | Cann View Wood | LGS | Neighbourhood |
| 517 | Near West Wood | LGS | Neighbourhood |
| 518 | Horsham Playing Fields | Neighbourhood | Neighbourhood |
| 519 | Staddiscombe Playing Fields | Neighbourhood | Neighbourhood |
| 520 | Woodland Belt 1 | LGS | Neighbourhood |
| 521 | Woodland Belt 2 | Neighbourhood | Neighbourhood |
| 522 | Woolwell Park | LGS | Neighbourhood |
| 523 | Carron Lane | LGS | Neighbourhood |
| 526 | Hemerdon Heights | LGS | Neighbourhood |
| 527 | Cemetery - Brixton | LGS | Neighbourhood |
| 528 | Orchard - Brixton | LGS | Neighbourhood |
| 529 | Bickleigh School | Neighbourhood | Neighbourhood |

Table 4 – Summary of Value Threshold Scores by Type and Size (Table 7.4 from POSA)

| Type of Green Space | Value score above which a site is CGS |
|--|--|
| Parks and Gardens | |
| Large - More than 10ha | 48 |
| Medium - 2-10ha | 33 |
| Small - less than 2ha | 25 |
| Natural and Semi-natural Green Space | |
| Large - More than 10ha | 43 |
| Medium - 2-10ha | 43 |
| Small - less than 2ha | 24 |
| Green Corridors | |
| All Sizes | 25 |
| Amenity Green Spaces | |
| Large - More than 10ha | 38 |
| Medium - 2-10ha | 30 |
| Small - less than 2ha | 20 |
| Allotments, Community Gardens and Urban Farms | |
| All Sizes | 14 |
| Churchyards and Cemeteries | |
| All Sizes | 24 |