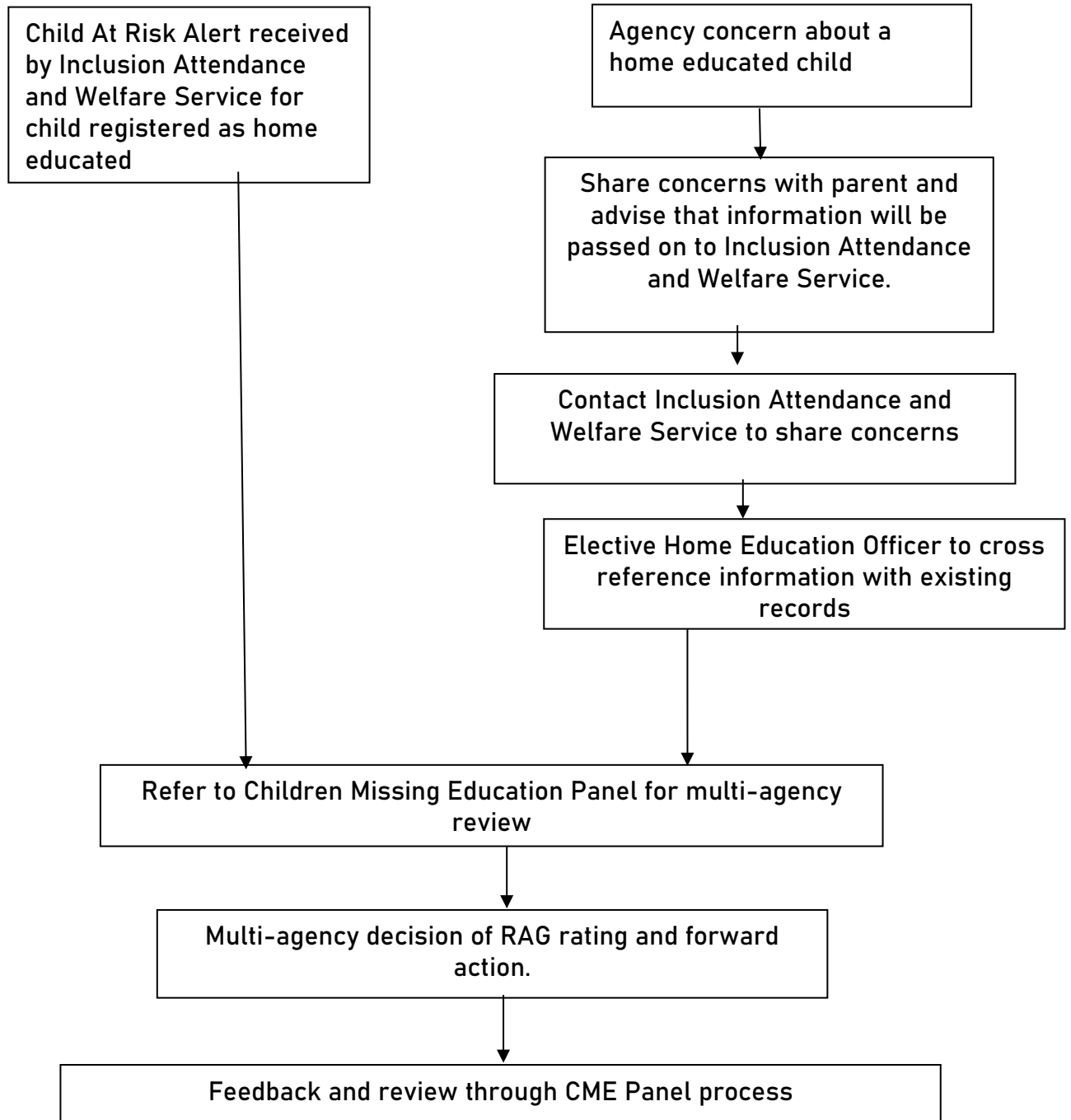


TECHINICAL PAPER 7 – EHE Referral to Children Missing Education (CME)  
Panel

NB: These procedures do not seek to replace or act as an alternative to Plymouth's safeguarding arrangements. If you're worried about a child or young person or think they're being abused, even if you're unsure, call 01752 668000 or email [gateway@plymouth.gov.uk](mailto:gateway@plymouth.gov.uk) or outside of normal working hours call Plymouth Out of Hours Service on 01752 346984. The Gateway service is made up of multi-agency professionals who can give you advice, information and support. You can also contact the NSPCC if you want to talk to someone about your concerns and get advice. Call 999 if the child is in real danger now.